

# **Hitachi EX150 Preview**

**This single sample file  
contains samples for**

**419 Hitachi EX150 WSM [938p]**

**419 Hitachi EX150 Parts Book [312p]**

**419 Hitachi EX150 Ops Manual [148p]**

**419 Hitachi EX150 Equipment Component Parts [154p]**

**Ops = operators manual**

**WSM = workshop manual**

**[\*\*\*p] = \*\*\* pages**

**[info@farmequipmentmanuals.co.nz](mailto:info@farmequipmentmanuals.co.nz)**

PART No. EM133 – 1 – 4

# **Operator's Manual**

# **EX150**

## **Excavator**

Serial No. 03443 and up

# **HITACHI**

## INTRODUCTION

**Read this manual** Carefully to learn how to operate and service your machine correctly. Failure to do so could result in personal injury or machine damage.

**This manual should be considered** a permanent part of your machine and should remain with the machine when you sell it.

**This machine is of metric design.** Measurements in this manual are metric. Use only metric hardware and tools as specified.

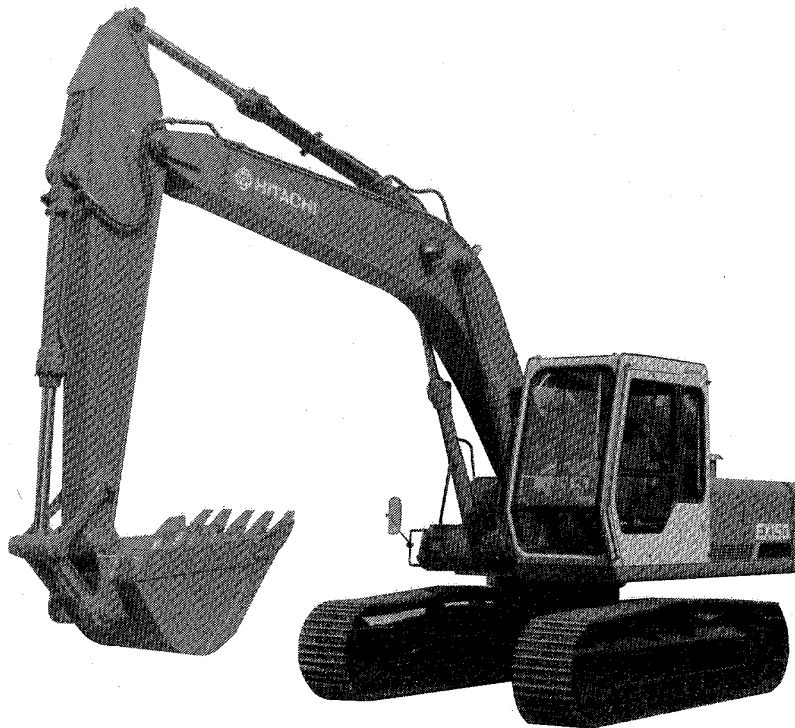
**Right-hand and left-hand** sides are determined by facing in the direction of forward travel.

**Write product identification numbers** in the Machine Numbers section. Accurately record all the numbers to help in tracing the machine should it be stolen. Your dealer also needs these numbers when you order parts. If this manual is kept on the machine, also file the identification numbers in a secure place off the machine.

**Warranty** is provided as part of Hitachi's support program for customers who operate and maintain their equipment as described in this manual. The warranty is explained on the warranty certificate which you should have received from your dealer.

This warranty provides you the assurance that Hitachi will back its products where defects appear within the warranty period. In some circumstances, Hitachi also provides field improvements, often without charge to the customer, even if the product is out of warranty. **Should the equipment be abused, or modified to change its performance beyond the original factory specifications, the warranty will become void and field improvements may be denied.** Setting fuel delivery above specifications or otherwise overpowering machines will result in such action.

Only qualified, experienced operators officially licensed (according to local law) should be allowed to operate the machine. Moreover, only officially licensed personnel should be allowed to inspect / service the machine.



All information, illustrations and specifications in this manual are based on the latest product information available at the time of publication. The right is reserved to make changes at any time without notice.

# CONTENTS

## **SAFETY ..... 1**

### **NAME AND FUNCTION OF COMPONENTS**

Getting In/Out the Machine .....	19
Controls (SDX) .....	20
Controls (DX) .....	21
Instrument Panel (SDX) .....	22
Instrument Panel (DX) .....	23
Accelerator Lever .....	24
Starter Switch .....	26
Gauges and Indicators .....	26
Mode Selection (SDX) .....	32
Travel Levers .....	35
Control Levers .....	37
Seat Belt .....	38
Operator Seat Adjustment .....	39
Emergency Exit .....	42
Breaking-In the New Machine .....	44
Break-In the Excavator Correctly .....	44

## **PRESTART INSPECTION ..... 45**

### **OPERATION**

Starting the Engine .....	46
Starting Procedure for Cold Conditions .....	47
Stopping the Engine .....	48
Warming-Up .....	49
Traveling .....	50
Operating on Soft Ground .....	51
Operating Backhoe .....	53
Instruction for Long Arm .....	55
Face Shovel Operation .....	57
Parking the Machine .....	59

### **TRANSPORTING**

Transporting by Road .....	60
Transporting the Machine by Trailer .....	60
Dimensions for Transportation .....	63

### **COMPONENTS LOCATIONS AND CIRCUITS**

General .....	63
Hydraulic System (SDX) .....	65
Hydraulic System (DX) .....	66
Electrical Circuit (SDX) .....	67
Electrical Circuit (DX) .....	69

## **MAINTENANCE**

Correct Maintenance and Inspection	
Procedures .....	71
Service Your Machine at Specified	
Intervals .....	72
Use Correct Fuels and Lubricants .....	72
Prepare Machine for Maintenance .....	73
Periodic Replacement of Parts .....	74
Maintenance Guide .....	76
A. Greasing .....	78
B. Engine Oil .....	81
C. Gear Oil .....	84
D. Hydraulic System .....	86
E. Fuel System .....	94
F. Air Intake .....	97
G. Cooling System .....	98
H. Electrical System .....	102
I. Others	
1. Bucket teeth .....	106
2. Checking track link tension .....	107
3. Check the bucket linkage	
clearance .....	108
4. Retorque check .....	109
5. Check and replace seat belt .....	113
Maintenance Services under Various	
Conditions .....	114

## **STORAGE ..... 115**

### **ASSEMBLY OF FRONT-END**

#### **ATTACHMENT ..... 116**

## **TROUBLESHOOTING ..... 125**

## **SPECIFICATIONS ..... 133**

## **HANDLING OPTIONAL ATTACHMENTS 137**

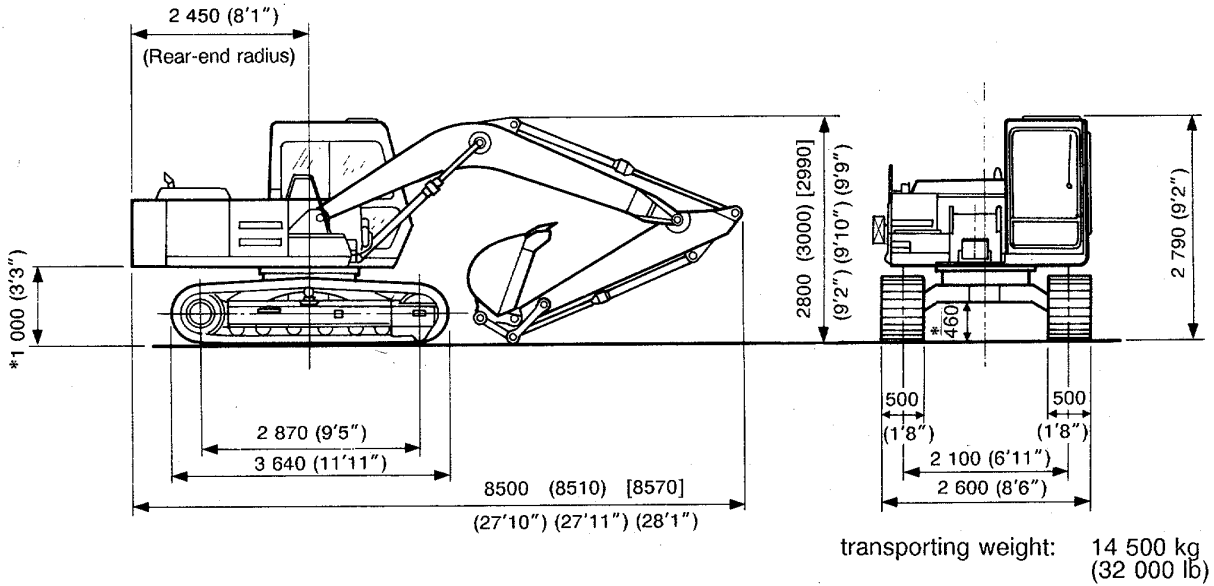


## TRANSPORTING

### DIMENSIONS FOR TRANSPORTATION

**NOTE:** The following figure indicates the dimensions of the machine with a standard arm.  
 In ( ) is the dimension with a long arm.  
 In [ ] is the dimension with a short arm.

Unit: mm  
 (ft-in)



**NOTE:**

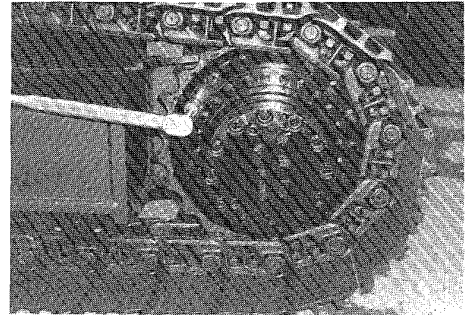
\* Track shoes lug height not included.

## MAINTENANCE

⑬ **Bolts, fixing travel units and sprockets.**

Tool : 24 mm

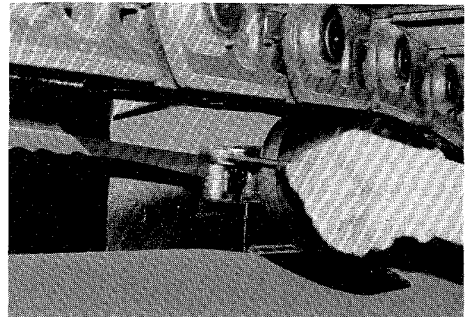
Torque : 265 N·m (27 kgf·m, 195 lbf·ft)



⑭ **Bolts, fixing carrier roller.**

Tool : 24 mm

Torque : 206 N·m (21 kgf·m, 152 lbf·ft)



⑮ **Bolts, fixing track roller.**

Tool : 24 mm

Torque : 265 N·m (27 kgf·m, 195 lbf·ft)

(Bolts, fixing track guard)

Tool : 24 mm

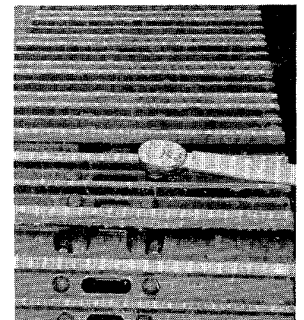
Torque : 265 N·m (27 kgf·m, 195 lbf·ft)



⑯ **Shoe bolts**

Tool : 24 mm

Torque : 441 N·m (45 kgf·m, 325 lbf·ft)



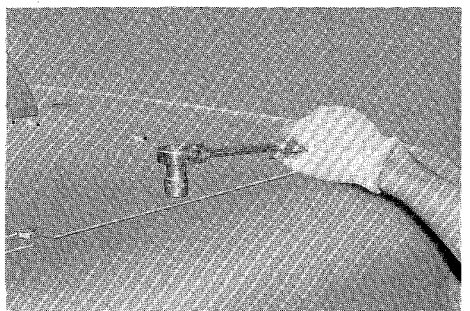
⑰ **Bolts, fixing cover, etc.**

Tool : 17 mm

Torque : 49 N·m (5 kgf·m, 36 lbf·ft)

Tool : 19 mm

Torque : 88 N·m (9 kgf·m, 65 lbf·ft)

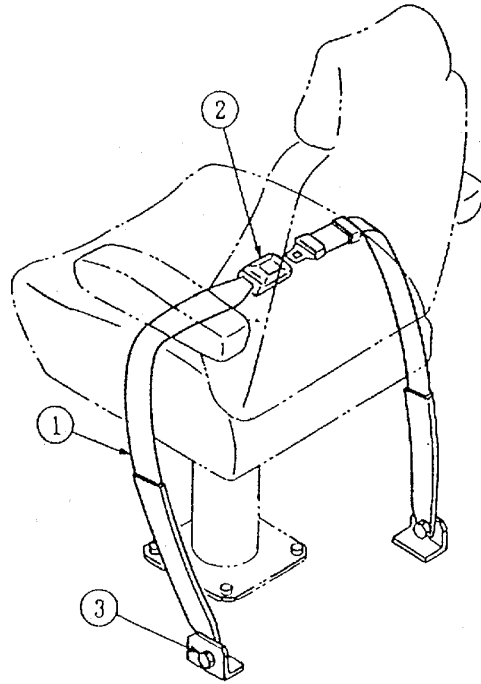


## MAINTENANCE

### 5 Check and Replace Seat Belt Check — every 8 hours Replace — every 3 years

Examine seat belt webb ①, buckle ② and attaching hardware ③. Replace the seat belt webb, buckle, or attaching hardware if they are damaged, or worn.

Replace seat belt every 3 years, regardless of appearance.



M107-07-111

## MAINTENANCE

### MAINTENANCE SERVICES UNDER VARIOUS CONDITIONS

Conditions	Maintenance services	
Operation in mud, water, rain or snow	Before operation	: Check plugs and cocks for tightness.
	After operation	: Clean entire machinery and check for cracked, damaged, loosened or missing nuts and bolts. Lubricate each point.
Operation in seaside	Before operation	: Check plugs and cocks for tightness.
	After operation	: Flush with fresh water any parts in actual contact with salt water. Pay particular attention to electric parts and take necessary measures to protect them from the damages of salt.
Operation in dust and grit	Air cleaner	: Clean element more frequently than under usual conditions.
	Radiator	: Flush with fresh water to remove dust and grit from the core.
	Oil cooler front net	: Clean
	Fuel system	: Clean strainer and filter element more frequently than under usual conditions.
	Electrical accessories	: Clean starter and generator's commutators.
Operation in rocky terrain	Tracks	: Check for damage to tracks, rollers, idlers and tumblers. Check for loosened, damaged or missing nuts and bolts.
	Front-end attachment	: When machine is to be operated under tough conditions, use proper attachment or reinforce it as necessary.
Operation with danger of falling stones	Cab head guard	: Use head guard.
Operation in extreme cold	Lubricating oil	: Refer to LUBRICATION CHART. Use cold weather type of good quality oil and grease.
	Cooling water	: Use sufficient anti-freeze in radiator.
	Battery	: Recharge more frequently than under normal conditions.
	Tracks	: Remove accumulated mud.



## Section 1

## HOW TO USE

### CONTENTS

#### Group 1-SECTION & GROUP CONTENTS

..... HU9-1A-1~4

#### Group 2-INTRODUCTION ..... HU3-2-1~2

- 1. Introduction ..... HU3-2-1
- 2. Care of the Handling ..... HU3-2-1
- 3. Symbols ..... HU3-2-2

#### Group 3-FEATURES OF THIS MANUAL

..... HU3-3-1~2

- 1. Construction ..... HU3-3-1
- 2. Tab ..... HU3-3-2
- 3. Page ..... HU3-3-2
- 4. Contents ..... HU3-3-2

#### Group 4-SAFETY INFORMATIONS ..... HU3-4-1~4

**SECTION 1 HOW TO USE**

Group 1	Section & Group Contents .....	HU9-1A
Group 2	Introduction .....	HU3-2
Group 3	Features of this Manual .....	HU3-3
Group 4	Safety Informations .....	HU3-4

**SECTION 2 SPECIFICATIONS**

Group 1	General Specifications .....	SP83-1A
Group 2	Components Specifications .....	SP83-2A
Group 3	Torque References .....	SP83-3
Group 4	Others .....	SP81-4
Group 5	Conversion Table .....	CT-1

**SECTION 3 GENERAL**

Group 1	Introduction .....	GN9-1
Group 2	Construction .....	GN9-2
Group 3	Hydraulic System .....	GN9-3
Group 4	Electric System .....	GN9-4
Group 5	Maintenance .....	GN9-5

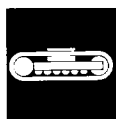
**SECTION 4 SUPERSTRUCTURE**

Group 1	Superstructure .....	SS-21
Group 2	Hydraulic Pump .....	HYP-42
Group 3	Control Valve .....	CV-30B
Group 4	Swing Device	
	Swing Motor .....	HYM-51A
	Swing Reduction Device .....	SRD-10
Group 5	Pilot Valve	
	Operational Principle, Disassembly & Assembly (For Front-End Attachment) .....	PV-9
	Disassembly & Assembly (For Travel) .....	PV-10
Group 6	Control Neutralizer Valve .....	CNV-1
Group 7	Shockless Valve .....	SHV-1
Group 8	Accumulator .....	ACC-4
Group 9	Solenoid Valve .....	SOV-9
Group 10	Mode Selection Cylinder .....	CY-13

---

**SECTION & GROUP CONTENTS**

---

**SECTION 5 UNDERCARRIAGE**

Group 1	Undercarriage .....	UC-24
Group 2	Travel Device	
	Operational Principle of Travel Motor .....	HYM-45A
	Disassembly & Assembly of	
	Travel Motor & Travel Device .....	HYM-45A
Group 3	Center Joint .....	CJ-10

**SECTION 6 FRONT-END ATTACHMENTS**

Group 1	Front-End Attachment .....	FA14-1
Group 2	Hydraulic Cylinder	
	Operational Principle .....	CY-12
	Disassembly & Assembly .....	CY-22
Group 3	Pin & Bushing .....	FA14-3
Group 4	Point & Side Cutter .....	FA14-4

**SECTION 7 HYDRAULIC SYSTEM**

Group 1	Outline .....	HS-5A
Group 2	Main Hydraulic Circuit .....	HS-5A
Group 3	Pilot Circuit .....	HS-5A
Group 4	Single Operation .....	HS-5A
Group 5	Combined Operation .....	HS-5A
Group 6	Extra Control Circuit .....	HS-5A
Group 7	Hydraulic Circuit .....	HS-5A

**SECTION 9 ELECTRICAL SYSTEM**

Group 1 Safety Precautions .....	ES5-1
Group 2 Specifications .....	ES5-2A
Group 3 Construction & Function .....	ES5-3
Group 4 Circuit Operations .....	ES5-4
Group 5 Maintenance .....	ES5-5A

**SECTION 10 TROUBLESHOOTING**

Group 1 Introduction .....	TS11-1
Group 2 Diagnose Malfunctions .....	TS11-2A
Group 3 Excavator Performance Test .....	TS11-3B
Group 4 Components Performance Standard .....	TS11-4B
Group 5 Electrical System Test .....	TS11-5

**SECTION 11 ENGINE**

Group 1 General Information .....	EG9-1
Group 2 Maintenance .....	EG9-2
Group 3 Engine Disassembly .....	EG9-3
Group 4 Inspection & Repair .....	EG9-4
Group 5 Engine Assembly .....	EG9-5
Group 6 Lubricating System .....	EG9-6
Group 7 Cooling System .....	EG9-7
Group 8 Fuel System .....	EG9-8
Group 9 Turbo Charger .....	EG9-9
Group 10 Engine Electricals .....	EG9-10
Group 11 Troubleshooting .....	EG9-11
Group 12 Special Tool List .....	EG9-12



## TIGHTENING TORQUE

- 1** Engine insulation rubber fixing bolts.

Torque: 195 ft.lbs (27 kgf-m) 265 N-m

 : 24 mm

- 2** Engine insulation rubber fixing nuts.

Torque: 101 ft.lbs (14 kgf-m) 137 N-m

 : 22 mm

- 3** **4** Engine bracket fixing bolts and nuts.

Torque: 36 ft.lbs (5 kgf-m) 49 N-m

 : 17 mm

- 5** **6** Hydraulic tank and fuel tank fixing bolts.

Torque: 152 ft.lbs (21 kgf-m) 206 N-m

 : 24 mm

- 7** Hydraulic hoses and pipe unions.

 : 19 mm

Torque: 22 ft.lbs (3 kgf-m) 29 N-m

 : 22 mm


Torque: 29 ft.lbs (4 kgf-m) 39 N-m

 : 32 mm

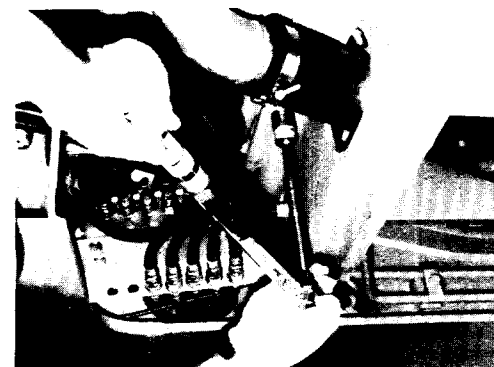
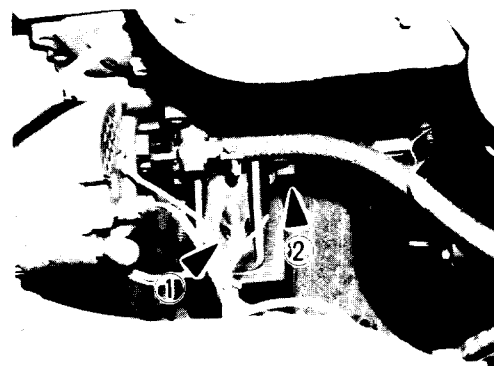
Torque: 101 ft.lbs (14 kgf-m) 135 N-m

 : 36 mm

Torque: 130 ft.lbs (18 kgf-m) 174 N-m

 : 41 mm

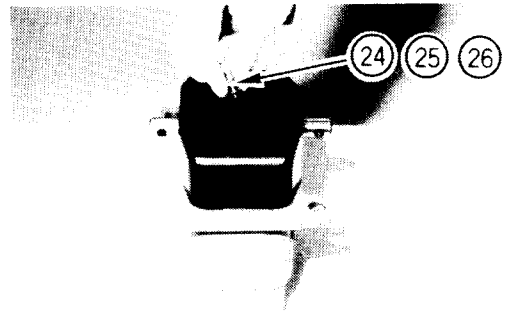
Torque: 152 ft.lbs (21 kgf-m) 206 N-m



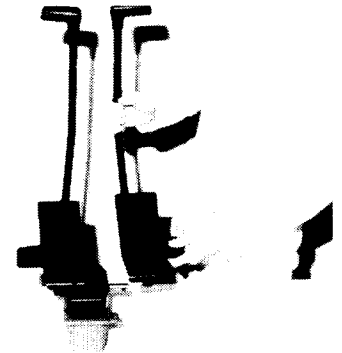
## HV TYPE PILOT VALVE (FOR TRAVEL)

- 31** Install bolt (24), plain washer (25) and spring washer (26).

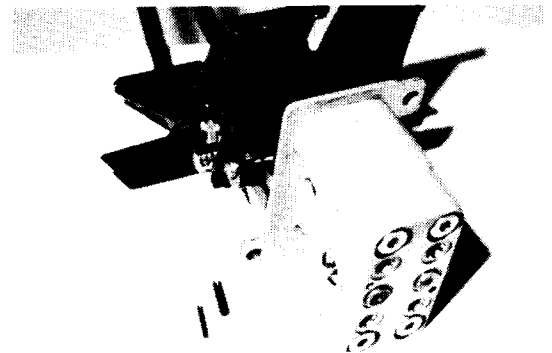
 : 10 mm



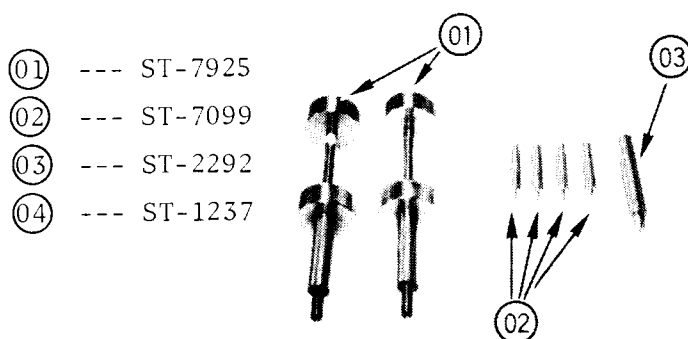
- 32** Install both right and left levers.



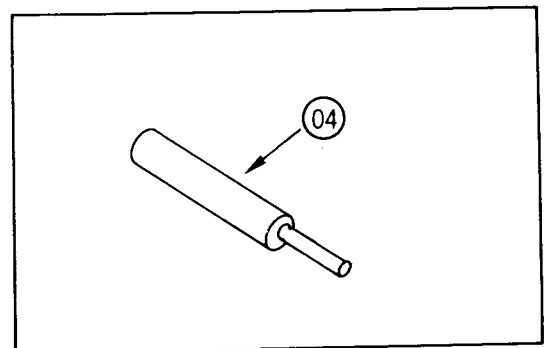
- 33** Install two spring pins.



## 3. SPECIAL TOOLS

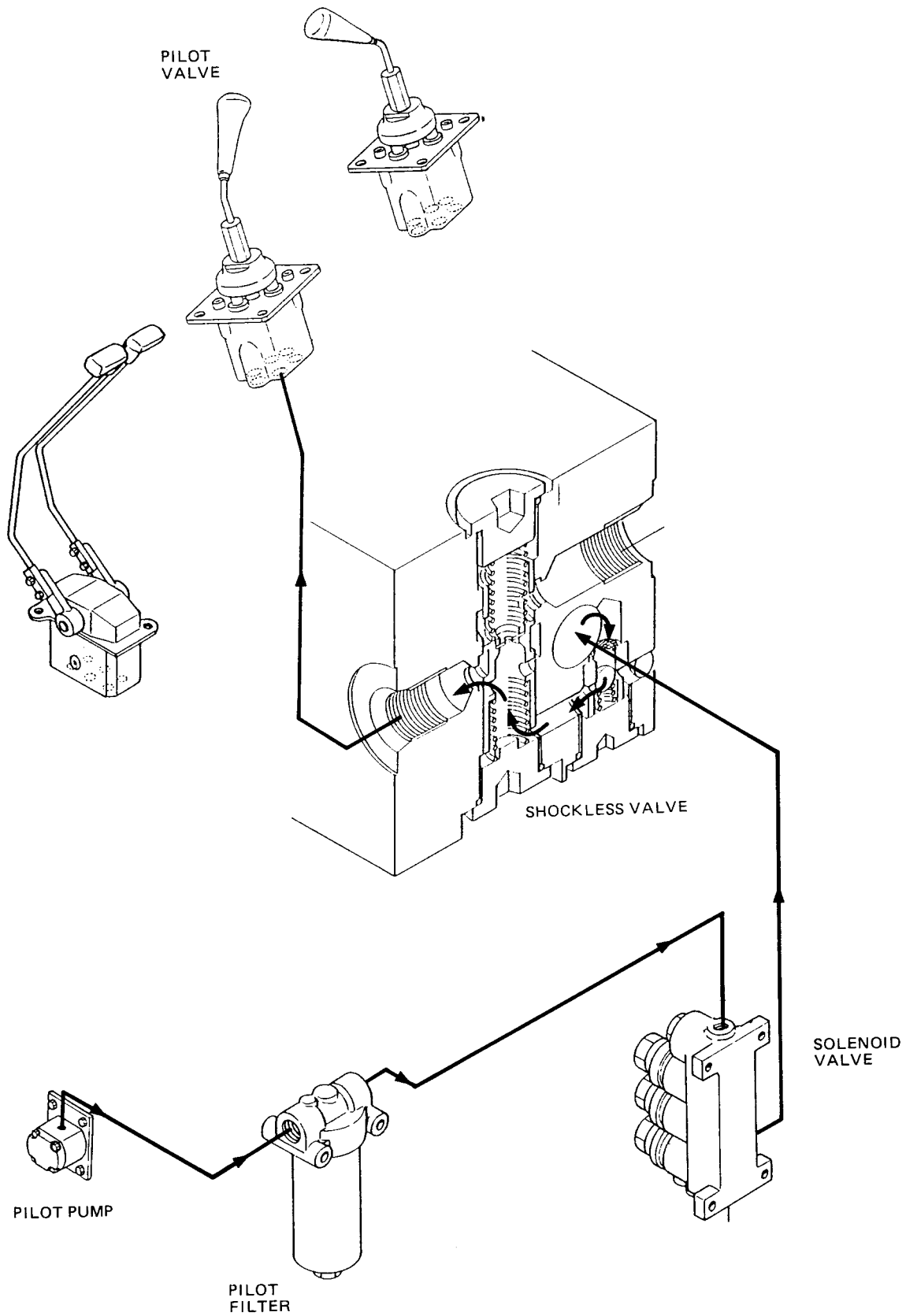


- (01) --- ST-7925  
(02) --- ST-7099  
(03) --- ST-2292  
(04) --- ST-1237



ST-NUMBER	TOOL NAME	Q'ty	USE
ST7925	Valve holder ass'y	2	to remove and install holder
ST7099	Holder removing guide	4	to keep straight the spool
ST2292	Bushing driving guide	1	to install the bushing
ST1237	Spring pin removing guide	1	to remove the spring pin

SHOCKLESS VALVE



— HEAT-RUN CIRCUIT —

Fig. 5

---

SHOCKLESS VALVE

---

---

1. DISASSEMBLY

---


NOTE: Before disassembling clean the valve assembly.

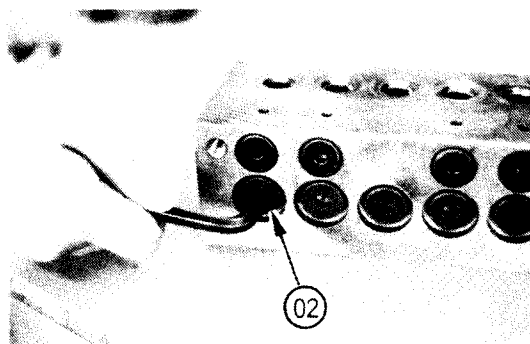
---

DISASSEMBLY OF FLOW CONTROL ASS'Y


---

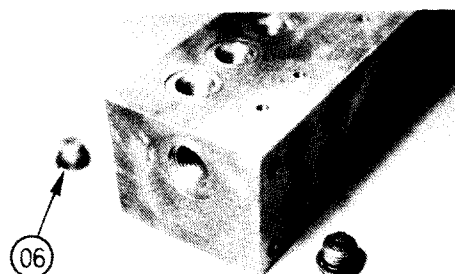
- 1** Remove plug (02)

 : 8 mm

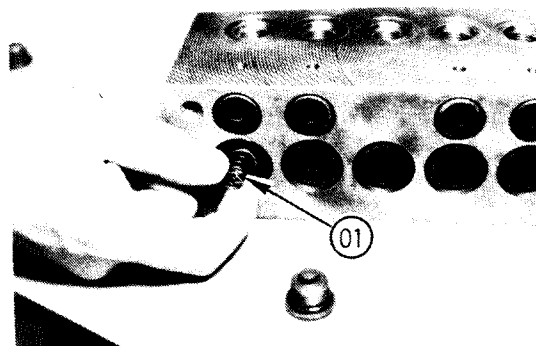


- 2** Remove plug (06)

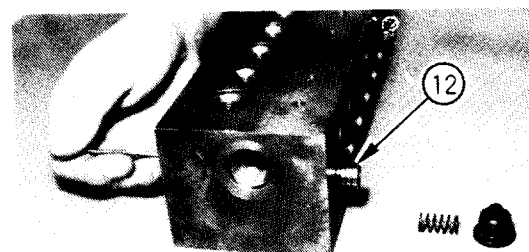
 : 8 mm



- 3** Remove spring (01)



- 4** Remove plunger ass'y (12)



## INSPECTION &amp; REPAIR

**Judgement**

1. Wait for thirty to forty seconds.

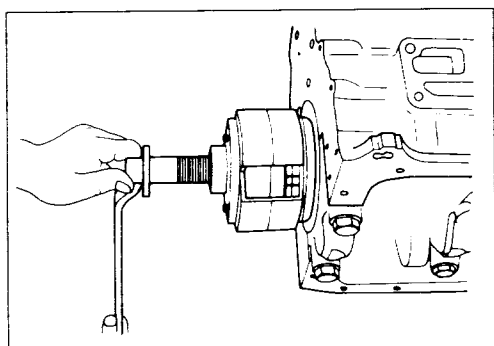
If there is no discoloration after thirty or forty seconds, the crankshaft is useable.

If discoloration appears (the surface being tested will become the color of copper), the crankshaft must be replaced.

2. Clean the surface being tested with clean water or steam immediately after completing the test.

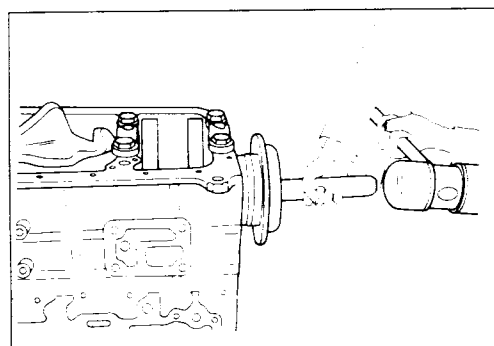
**Note:**

The ammonium cuprous chloride solution is highly corrosive. Because of this, it is imperative that the surfaces being tested be cleaned immediately after completing the test.

**Oil Seal Wear Ring Replacement (6BD1T Only)****Removal**

Use the oil seal wear ring remover to remove the oil seal wear ring from the crankshaft front end.

Oil Seal Wear Ring Remover:

**Installation**

Use a brass bar and a hammer to drive the oil seal wear ring into place.

**Crankshaft Gear Inspection**

Visually inspect the crankshaft gear.

Replace the crankshaft gear if excessive wear or damage is discovered.

編 番  
PART NO.  
P133-E1-6

# **PARTS LIST**

## パーツリスト

# EX150

## EQUIPMENT COMPONENTS PARTS

## 機器インナーパーツ

適用号機 01001~  
Serial NO.



## FOREWORD

- ◎ This parts list shows the precision parts of EX150 Hydraulic excavator.  
The numerical parts No. index is provided at the end of this parts list.  
In the parts index, a part No. with "\*" mark shows a newly added part on the parts list.
- ◎ This parts list contains the most recent information available at the time of printing, and the contents of the list are based on information in effect at that time and are subject to change without notice.
- ◎ The references in the parts list of "LEFT", "RIGHT", "FRONT" and "REAR" are identified as follows.  
The driver's seat is positioned "LEFT" side, and the opposite side is "RIGHT".  
The front attachment is at the "FRONT". The counterweight is attached at the "REAR".  
For the track, the travel motor is at the "REAR", and the opposite is "FRONT".

### 1. HOW TO ORDER PARTS

When ordering parts, Please specify the following items as shown in the following example.

(EXAMPLE)		
(1) Model of Machine	(EX150)	} Shown on NAME-PLATE provided on MAIN FRAME on the lower right side of CAB
(2) Machine Serial No.	(133-01001)	
(3) Part No.	(A810165)	} Ordering Parts
(4) Part Name	(O-RING)	
(5) Q'ty	(2)	Ordering Q'ty
(6) Purchaser's Name and Address		

### 2. HOW TO USE THIS PARTS LIST

- ITEM           Item No. Shows the reference No. on the machine illustration.
- PART NO.       Part No. consists of a letter of the alphabet and numerals, or numerals only.

目 次  
CONTENTS

P B - 1 6 7

P B - A 2 7

部品番号 PART NO.	コード CODE	部 品 名	PART NAME	適用号機 SERIAL NO.	頁 PAGE
ポンプ			PUMP		
4205209	0331200A	ポンプ;ピストン	PUMP;PISTON		001
4217020	0331300B	・レギュレータ	・REGULATOR		003
4217021	0331400B	・レギュレータカバー部	・REGULATOR COVER PART		005
4217022	0331500A	・切換弁カバー部	・VALVE COVER PART		007
4217023	0331600	・コントロール部	・CONTROL PART		009
4217024	0331700	・ロータリグループ (駆動側)	・ROTARY GROUP (DRIVE SIDE)		011
4217025	0331800	・ロータリグループ (非駆動側)	・ROTARY GROUP (IDLER SIDE)		013
4206916	0312300A	・パイロットギヤポンプ	・PILOT GEAR PUMP		015
モータ;オイル			MOTOR;OIL		
4200626	-----	モータ;オイル (旋回)	MOTOR;OIL (SWING)	01001~01276	---
++++++	0327300A1	・モータ;オイル (1/2)	・MOTOR OIL (1/2)		017
++++++	0327300A2	・モータ;オイル (2/2)	・MOTOR OIL (2/2)		019
4213113	0327900	・バルブ;リリーフ	・VALVE;RELIEF		021
4224990	-----	モータ;オイル (旋回)	MOTOR;OIL (SWING)	01277~	---
++++++	0357100A1	・モータ;オイル (1/2)	・MOTOR OIL (1/2)		023
++++++	0357100A2	・モータ;オイル (2/2)	・MOTOR OIL (2/2)		025
4213113	0327900	・バルブ;リリーフ	・VALVE;RELIEF		(021)
4198247	-----	モータ;オイル (走行)	MOTOR;OIL (TRAVEL)	01001~01276	---
4206274	0310000	・モータ;オイル	・MOTOR;OIL	01001~01276	027
4206275	0310100	・トランスミッション	・T.MISSION	01001~01276	029
4225020	-----	モータ;オイル (走行)	MOTOR;OIL (TRAVEL)	01277~	---
4237916	-----	・モータ;オイル	・MOTOR;OIL	01277~	---
++++++	0356900A1	・モータ;オイル (1/2)	・MOTOR OIL (1/2)		031
++++++	0356900A2	・モータ;オイル (2/2)	・MOTOR OIL (2/2)		033
4237918	0357500A	・トランスミッション	・T.MISSION	01277~	035
バルブ			VALVE		
4193180	0328500A	バルブ;コントロール	VALVE;CONTROL	01001~01276	037
4229940	-----	バルブ;コントロール	VALVE;CONTROL	01277~	---



部品番号 PART NO.	コード CODE	部 品 名	PART NAME	適用号機 SERIAL NO.	頁 PAGE
++++++	0357800A1	・バルブ；コントロール (1/5)	・VALVE;CONTROL (1/5)		039
++++++	0357800A2	・バルブ；コントロール (2/5)	・VALVE;CONTROL (2/5)		041
++++++	0357800A3	・バルブ；コントロール (3/5)	・VALVE;CONTROL (3/5)		043
++++++	0357800A4	・バルブ；コントロール (4/5)	・VALVE;CONTROL (4/5)		045
++++++	0357800A5	・バルブ；コントロール (5/5)	・VALVE;CONTROL (5/5)		047
9071984	9071984A	バルブ；パイロット	VALVE;PILOT	01001~D90/06	049
# 9107499	9107499	バルブ；パイロット	VALVE;PILOT	D90/07~	051
9071983	9071983D	バルブ；パイロット	VALVE;PILOT		053
9059848	9059848B	バルブ；パイロット	VALVE;PILOT		055
9072923	9072923	バルブ；パイロット	VALVE;PILOT	01001~H00783	057
9072923	9072923C	バルブ；パイロット	VALVE;PILOT	H00784~	059
4196411	0308700A	バルブ；ソレノイド	VALVE;SOLENOID		061
9072360	9072360A	バルブ；チェック	VALVE;CHECK		063
4188553	0309800A	バルブ；ショックレス	VALVE;SHOCKLESS		065
4179025	0309900	バルブ；ロック	VALVE;LOCK	01001~01023	067
4179025	0309900B	バルブ；ロック	VALVE;LOCK	01024~	069
4209994	0322100	バルブ；リリーフ	VALVE;RELIEF		071
4201401	0370200	バルブ；ホールディング	VALVE;HOLDING		073
4230192	0370400	バルブ；ホールディング	VALVE;HOLDING		075
4206538	0370500	バルブ；ホールディング	VALVE;HOLDING		077

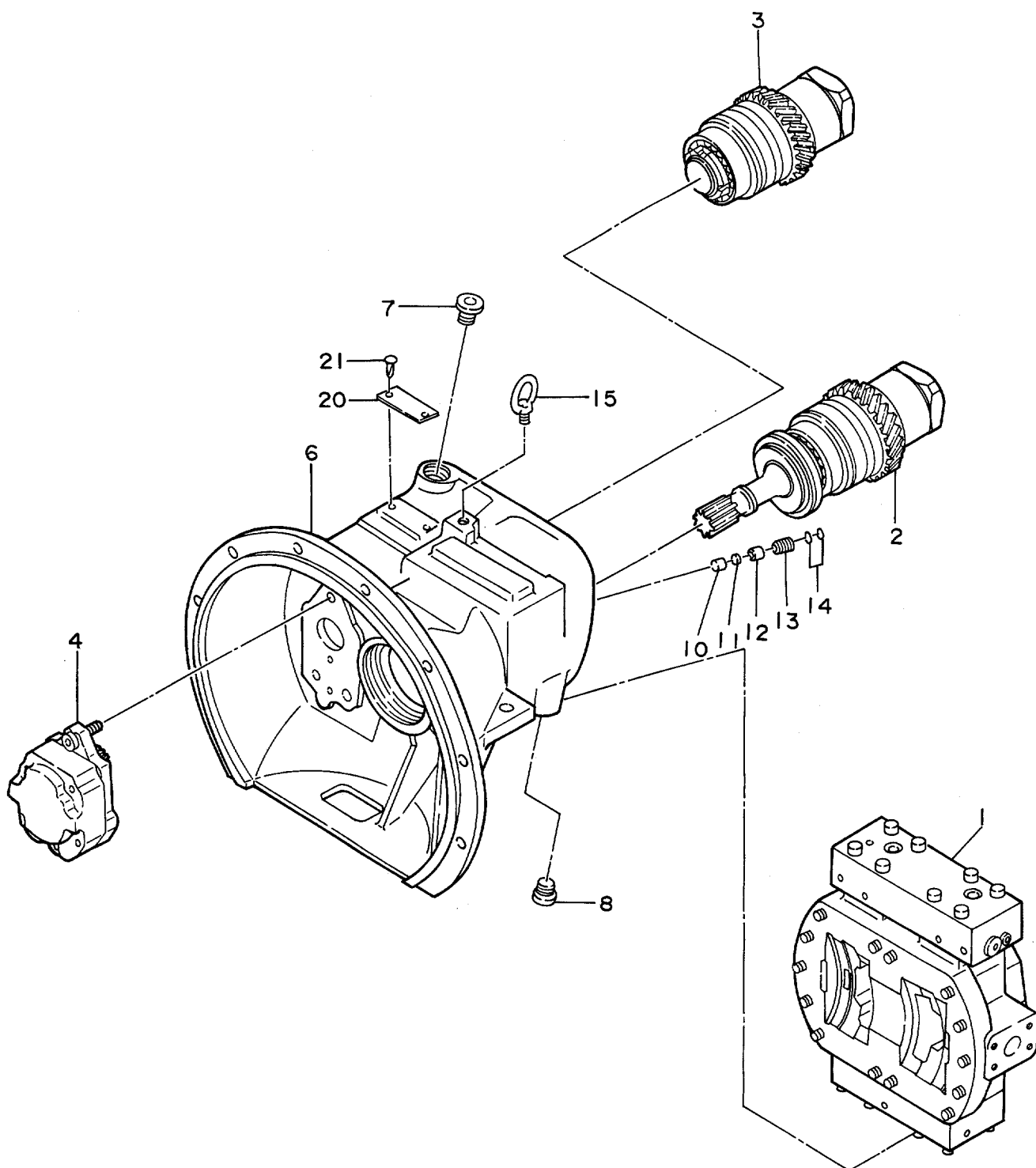
シリンダ

CYLINDER

4193531	0327400A	シリンダ；ブーム（右）	CYL.;BOOM (R)		079
4193533	0327500A	シリンダ；ブーム（左）	CYL.;BOOM (L)		081
4193532	0327600A	シリンダ；アーム	CYL.;ARM		083
4193534	0327700B	シリンダ；バケット	CYL.;BUCKET		085

索 引

PARTS INDEX



01001~

FD-Z 1 (1001)

バルブ;ホールドイング  
VALVE;HOLDING

01001~

符号 ITEM	部品番号 PART NO.	部 品 名 PART NAME	or PART NAME CODE	数量 Q'TY	サービス コード S.C	適用号機 SERIAL NO.	互 換 性 ICA	代 替 部 品 REPLACEABLE PART	
								部品番号 PART NO.	数量 Q'TY
0	4201401	VALVE;HOLDING	0370200	1					
1	0370201	・BODY;SUB ASS'Y		1					
2	++++++	・・BODY		1	D				
3	++++++	・・SPOOL		1	D				
4	0370202	・PLUG		1					
5	0370203	・HOLDER;SPRING		1					
6	0370204	・PLUNGER		1					
7	0370205	・SPRING		1					
10	0370206	・SPRING		1					
11	0370207	・SPRING		1					
12	0370208	・POPPET		1					
13	0370209	・PLUG		1					
24	0370210	・SPRING		1					
25	++++++	・NAME-PLATE		1	D				
26	0314205	・PLUG		3					
29	0309805	・PLUG		2					
30	0208717	・SCREW;DRIVE		2					
31	957366	・O-RING		3					
32	4509180	・O-RING		3					
36	4506429	・O-RING		1					
40	0343514	・PLUG		6					
41	0370211	・RELIEF;SUB ASS'Y		1					
42	++++++	・・SEAT		1	D				
43	++++++	・・FILTER		1	D				
44	++++++	・・SLEEVE		1	D				
45	++++++	・・POPPET		1	D				
46	++++++	・・SPRING		1	D				
47	++++++	・・RING;GASKET		1	D				
48	++++++	・・NUT;CAP		1	D				
49	++++++	・・SCREW;ADJUST		1	D				
50	++++++	・・PLUG		1	D				
51	4502456	・・O-RING		1					
52	4163873	・・O-RING		1					
	4163874	・・RING;BACK-UP		1					

# **PARTS INDEX**

## Parts Index

PART NO.	PAGE	ITEM	PART NO.	PAGE	ITEM	PART NO.	PAGE	ITEM
A590910.....	054A	26	0174516.....	082A	18	0224917.....	024	18
	056	26	0178820.....	080A	64	0224923.....	018	29
A590914.....	080B	66		082A	64		024	29
	082B	66		084A	62	0225614.....	080A	15
A810025.....	050A	11C		086A	58		082A	15
	050A	12C	0208304.....	084A	5		086A	15
	052	11C	0208305.....	084A	7	0228803.....	066	22
	052	12C	0208306.....	084A	8	0230124.....	004	48
	054A	11C	0208307.....	084A	10	0230126.....	002	8
	056	11C	0208516.....	080A	62	0230303.....	006	11
	058	11C		082A	62	0231017.....	004	45
	060A	11C		084A	65	0231020.....	004	51
A810060.....	050B	17		086A	63	0231222.....	006	9
	052	17	0208604.....	080A	5	0234801.....	008	17
A811030.....	076	33		082A	5	0236915.....	080B	68
	078	33		086A	5		082B	68
A811040.....	028B	151B	0208605.....	080A	7	0242006.....	002	21
	034A	151B		082A	7	0251318.....	028A	137
A811050.....	076	34		086A	7		032	137
	078	34	0208606.....	080A	8	0251319.....	028A	138
A811105.....	018	31		082A	8		032	138
	024	31		086A	8	0251401.....	028B	144
A811110.....	080A	11	0208607.....	080A	10		034A	144
	082A	11		082A	10	0251402.....	028B	145
	086A	11		086A	10		034A	145
A811115.....	084A	11	0208717.....	066	18	0251404.....	028B	148
J75481.....	084A	37		068	15		034A	148
	086A	36		070	15	0251405.....	028B	149
J75581.....	080A	40		074	29		034A	149
	082A	40		076	31	0251407.....	028B	151E
	086A	35		078	31	0251408.....	028B	151G
M341025.....	050B	14	0209322.....	038B	49	0251503.....	036A	201B
	054A	25		040	49	0251504.....	030A	201C
	056	25		042A	49		036A	201C
M341036.....	028B	151C	0214905.....	002	7	0251505.....	030A	201D
	034A	151C	0214908.....	004	33		036A	201D
M341225.....	050B	19	0215014.....	004	26	0251506.....	030A	201F
	052	19	0215015.....	004	31		036A	201F
0111707.....	028B	151D		006	17	0251510.....	030A	202C
	034A	151D		008	18		036A	202C
	080A	20	0215018.....	004	37	0251513.....	030A	203
	082A	20	0215022.....	002	11	0251514.....	030A	203A
	084A	20	0215103.....	008	3		036A	203A
	086A	20		010	3	0251515.....	030A	203B
0111711.....	020A	60	0215105.....	010	5		036A	203B
	026A	60	0215106.....	010	6	0251516.....	030A	203C
0111715.....	020A	62	0215109.....	008	8	0251517.....	036A	205
	022	13	0215209.....	006	5	0251519.....	030A	207
	026A	62	0215210.....	006	4		036A	207
0111804.....	028B	140J	0215215.....	006	7	0251520.....	030A	208
	034A	140J		008	10		036A	208
0111809.....	020B	68	0215221.....	004	32	0251521.....	030A	209
	026A	68		006	12		036A	209
0124006.....	028A	106		008	19	0251522.....	030A	210
	032	106	0215223.....	006	6		036A	210
0140808.....	080A	28	0215409.....	012	16	0251523.....	030A	211
	082A	28	0215423.....	012	19		036A	211
	084A	18	0215424.....	012	18	0251524.....	030A	213
	086A	28	0215614.....	016	14		036A	213
0158821.....	028A	121	0215615.....	016	15	0251525.....	030A	214
	032	121	0215616.....	016	16		036A	214
0158840.....	034A	141	0217408.....	028C	300	0251526.....	030A	216
0158855.....	030A	218		034B	300		036A	216
	036A	218	0224411.....	020A	61	0251527.....	030A	216
	086A	61		026A	61		036A	216
0159710.....	020B	67	0224911.....	018	11	0251528.....	030A	216
	026A	67		024	11		036A	216
0174403.....	084A	28	0224916.....	020A	19	0251529.....	030A	217
	086A	18		026A	19		036A	217
0174516.....	080A	18	0224917.....	018	18	0254312.....	080B	67

# Parts Index

088

PART NO.	PAGE	ITEM	PART NO.	PAGE	ITEM	PART NO.	PAGE	ITEM
0254312.....	082B	67	0309304.....	080A	4	0309423.....	040	31
0258205.....	084A	15		082A	4	0309424.....	038A	32
0259914.....	066	300		086A	4		040	32
0261308.....	084A	17	0309305.....	080A	6	0309425.....	038A	33
0261310.....	084A	12		082A	6		040	33
				086A	6	0309427.....	038A	35
0288618.....	020A	25	0309306.....	080A	9		040	35
	026A	25		082A	9	0309429.....	038A	39
0308701.....	062	1		086A	9		040	39
	072	1	0309308.....	084A	14	0309430.....	038B	41
0308702.....	062	2						
	072	2	0309309.....	084A	16		040	41
0308703.....	062	2-1	0309312.....	086A	60		042A	41
	072	2-1	0309313.....	084A	59	0309433.....	038B	44
0308704.....	062	2-2	0309314.....	084A	60		040	44
	072	2-2	0309401.....	038A	4		042A	44
0308705.....	062	2-3		048	4	0309434.....	038B	45
	072	2-3	0309402.....	038A	5		040	45
0308706.....	062	2-4		048	5		042A	45
	072	2-4	0309403.....	038A	8	0309435.....	038B	46
0308707.....	062	2-4		048	8		040	46
	072	2-4	0309404.....	038A	10		042A	46
0308708.....	062	2-4		048	10	0309436.....	038B	47
	072	2-4	0309405.....	038A	11		040	47
0308709.....	062	2-5		048	11		042A	47
	072	2-5	0309406.....	038A	13	0309437.....	038B	48
0308710.....	062	2-6		042A	13		040	48
	072	2-6	0309407.....	038A	14		042A	48
0308711.....	062	3		044	14	0309438.....	038B	50
0308712.....	062	8	0309408.....	038A	15		040	50
0308713.....	062	9		042A	15		042A	50
0308714.....	062	10	0309409.....	038A	16	0309439.....	038B	51
0308715.....	062	11		046	16		040	51
0308716.....	062	12	0309410.....	038A	17		042A	51
0308717.....	062	13		042A	17	0309440.....	038B	52
0308718.....	062	14	0309411.....	038A	18		040	52
0308719.....	062	15		042A	18		042A	52
0308720.....	062	16	0309412.....	038A	19	0309441.....	038B	69
0308721.....	062	17		042A	19		044	69
0308722.....	062	18	0309413.....	038A	20		046	69
0308723.....	062	19		040	20	0309442.....	038B	70
0308724.....	062	20		042A	20		044	70
0308725.....	062	25		044	20		046	70
0308726.....	062	26		046	20	0309443.....	038B	71
0308727.....	062	27	0309414.....	038A	21		044	71
0309004.....	084A	4		042A	21		046	71
0309005.....	084A	6		046	21	0309444.....	038B	76
0309006.....	084A	9	0309415.....	038A	22		044	76
0309010.....	080A	19		044	22	0309446.....	038B	81
	082A	19	0309416.....	038A	24		046	81
	084A	19		042A	24	0309447.....	038B	82
	086A	19		044	24		046	82
0309011.....	080A	21		046	24	0309448.....	038B	83
	082A	21	0309417.....	038A	25		046	83
	084A	21		040	25	0309449.....	038B	84
	086A	21		042A	25		044	84
0309013.....	080A	18	0309418.....	038A	26	0309450.....	038B	91
	082A	18		042A	26		042A	91
	084A	18	0309419.....	038A	27	0309451.....	038B	92
	086A	18		040	27		044	92
0309019.....	080A	56		042A	27	0309452.....	038B	93
	082A	56	0309420.....	038A	28		042A	93
	084A	56		040	28	0309453.....	038B	94
0309021.....	080A	63		042A	28		046	94
	082A	63	0309421.....	038A	29	0309454.....	038B	95
	084B	66		040	29		042A	95
	086A	64		042A	29		044	95
0309022.....	080A	61	0309422.....	038A	30		046	95
	082A	61		040	30	0309455.....	038B	96
	084A	64		042A	30		042A	96
	086A	62	0309423.....	038A	31		044	96

## Parts Index

PART NO.	PAGE	ITEM	PART NO.	PAGE	ITEM	PART NO.	PAGE	ITEM
0309455.....	046	96	0310008.....	028A	116	0310908.....	086A	17
0309456.....	038B	97		032	116	0311310.....	020A	14
	044	97	0310009.....	028A	117		026A	14
0309457.....	038B	101		032	117	0311313.....	020A	17
0309458.....	038C	102	0310010.....	028A	118		026A	17
0309459.....	038C	103		032	118	0311314.....	020A	20
0309460.....	038C	104	0310011.....	028A	119		026A	20
0309461.....	038C	105		032	119	0311315.....	020A	21
	042B	105	0310012.....	028A	120		026A	21
	044	105		032	120	0311316.....	018	23
0309463.....	038C	113	0310013.....	028A	122		024	23
	040	113		032	122	0311317.....	018	24
	042B	113	0310014.....	028A	127		024	24
0309464.....	038C	114		032	127	0311319.....	018	27
	042B	114	0310015.....	028A	128		020A	27
0309465.....	038C	115		032	128	0311325.....	020A	41
	040	115	0310016.....	028A	129	0311326.....	020A	46
0309466.....	038C	116		032	129		026A	46
	046	116	0310017.....	018	42	0311327.....	020A	49
0309467.....	038C	119		024	42		026A	49
	046	119		028A	130	0311328.....	020A	50
0309468.....	038C	120		032	130		026A	50
	046	120	0310018.....	028A	131	0311329.....	020A	51
0309470.....	038C	102		032	131		026A	51
0309502.....	038A	36	0310019.....	028A	134	0311330.....	020A	52
0309801.....	066	5		032	134		026A	52
0309802.....	066	9	0310020.....	028A	135	0311331.....	020A	53
0309803.....	066	12		032	135		026A	53
0309804.....	066	13	0310021.....	028A	136	0311332.....	020A	54
0309805.....	066	23		032	136	0311333.....	020A	55
	074	26	0310022.....	028A	140	0311334.....	020A	56
0309806.....	066	25	0310023.....	028B	140R	0311335.....	020A	57
0309807.....	066	26		034A	140R		026A	57
0309808.....	066	27	0310024.....	028B	141	0311336.....	020A	58
0309809.....	066	28	0310026.....	028B	151		026A	58
0309810.....	066	29		034A	151	0311337.....	020A	63
0309811.....	066	30	0310027.....	028B	151A		026A	63
0309812.....	066	30B		034A	151A	0311338.....	018	43
0309813.....	066	30C	0310028.....	028B	154		024	43
0309901.....	068	1		034A	123	0311339.....	020A	66
	070	1	0310101.....	030A	201	0311340.....	020B	70
0309902.....	068	1C	0310102.....	030A	201A		026B	70
	070	1C	0310103.....	030A	201B	0311341.....	020B	71
0309903.....	068	3	0310104.....	030A	202		026B	71
	070	3		036A	202	0311601.....	002	12
0309904.....	068	4	0310105.....	030A	202A	0311602.....	002	13
	070	4		036A	202A	0311704.....	004	58
0309905.....	068	6	0310106.....	030A	202B	0311801.....	006	8
	070	6		036A	202B	0311804.....	006	15
0309906.....	068	10	0310107.....	030A	202D	0311901.....	008	4
	070	10		036A	202D	0311903.....	008	7
0309907.....	068	11	0310108.....	030A	202F	0311904.....	008	9
0309908.....	068	12		030A	203E	0311905.....	008	11
	070	12		036A	202F	0312001.....	010	13
0309909.....	068	13		036A	203E	0312301.....	016	13
0309910.....	068	14	0310109.....	030A	205	0314205.....	074	25
	070	14	0310110.....	030A	206	0322101.....	072	3
0310001.....	028A	102		036A	206	0322102.....	072	5
	032	102	0310903.....	086A	3	0322103.....	072	6
0310002.....	028A	103	0310904.....	080A	12	0324404.....	008	22
	032	103		082A	12	0325907.....	084A	28
0310003.....	028A	104		086A	12	0325913.....	080A	65
	032	104	0310906.....	080A	14		082A	65
0310004.....	028A	107		082A	14		084A	63
	032	107		086A	14		086A	59
0310005.....	028A	108	0310907.....	080A	16	0327301.....	018	1
	032	108		082A	16	0327302.....	020A	2
0310006.....	028A	111		086A	16	0327303.....	018	3
	032	111	0310908.....	080A	17		024	3
0310007.....	028A	113		082A	17	0327304.....	018	4



# Parts Index

090

PART NO.	PAGE	ITEM	PART NO.	PAGE	ITEM	PART NO.	PAGE	ITEM
0327304.....	024	4	0328503.....	042A	43	0370201.....	074	0
0327305.....	018	7	0328504.....	038D	139	0370202.....	074	3
	024	7		040	54	0370203.....	074	4
0327306.....	018	9		042A	54	0370204.....	074	5
	024	9	0328505.....	038D	140	0370205.....	074	6
				040	53	0370206.....	074	7
0327307.....	018	10		042A	53	0370207.....	074	10
	024	10	0328506.....	038C	110	0370208.....	074	11
0327308.....	020A	12		040	110	0370209.....	074	12
	026A	12		042B	110	0370210.....	074	13
0327309.....	018	13		044	110	0370211.....	074	40
	024	13	0328507.....	038A	36	0370302.....	076	25
0327310.....	018	15	0331201.....	002	15		078	25
	024	15	0331304.....	002	20	0370401.....	076	0
0327311.....	018	16	0331202.....	002	20	0370402.....	076	3
	024	16	0331301.....	004	12		078	3
			0331302.....	004	13	0370403.....	076	4
0327312.....	018	30	0331303.....	004	25		078	4
	024	30	0331304.....	004	56	0370404.....	076	5
0327313.....	018	36	0331305.....	004	109		078	5
	024	36	0331306.....	004	116			
0327314.....	018	37				0370405.....	076	6
	024	37	0331307.....	004	120		078	6
0327315.....	018	38	0331308.....	004	124	0370406.....	076	7
	024	38	0331401.....	006	14		078	7
0327316.....	018	39	0331501.....	008	5		078	7
	024	39	0331502.....	008	12	0370407.....	076	8
			0331503.....	008	16		078	8
0327317.....	018	65	0331701.....	012	17	0370408.....	076	9
	024	65	0331702.....	012	16		078	9
0327318.....	018	73	0339113.....	076	30	0370409.....	076	10
	024	73		078	30		078	10
0327401.....	080A	1A						
			0343512.....	076	27	0370410.....	076	29
0327402.....	080A	2A		078	27		078	29
	082A	2A	0343514.....	074	36	0370411.....	076	40
0327403.....	080A	3		076	38	0370501.....	078	0
	082A	3		078	38	0370502.....	078	40
0327404.....	080A	13						
	082A	13	0343608.....	076	13	2022964.....	054B	31
	086A	13		078	13		056	31
0327405.....	080A	30	0343609.....	076	14	2023575.....	054A	24
	082A	30		078	14		056	24
	086A	25	0352225.....	026A	47	2024716.....	058	24
0327406.....	080A	54	0356604.....	026A	48		060A	24
0327407.....	080A	55	0356605.....	026A	54	2024717.....	058	31
0327408.....	080A	58	0356606.....	026A	55		060A	31
	082A	58	0356607.....	026A	56	2027534.....	054A	24A
0327409.....	080A	59	0356608.....	026A	66		056	24A
	082A	59	0356609.....	026B	74	2027695.....	054A	24A
0327410.....	080B	69	0356705.....	026A	41	2027698.....	060A	24A
	082B	69	0356901.....	032	113	3035541.....	064	00
0327501.....	082A	1A	0356902.....	034A	140	3035803.....	054B	27
0327502.....	082A	54	0356903.....	034B	151E		056	27
0327503.....	082A	55	0356904.....	034B	151G		058	27
0327601.....	084A	1A	0357001.....	036A	203		060A	27
0327602.....	084A	2A	0357002.....	036A	203C	3037551.....	050A	11D
0327603.....	084A	3	0357101.....	024	1	3037552.....	050A	12D
0327604.....	084A	13	0357102.....	026A	2	3037558.....	054A	11A
0327605.....	084A	54	0357501.....	036A	201		056	11A
0327606.....	084A	55	0357502.....	036A	201A		058	11A
0327607.....	084A	61	0357602.....	038B	101		060A	11A
0327701.....	086A	1A		042B	101	3037559.....	050A	11A
0327702.....	086A	2A	0357603.....	042B	102		050A	12A
0327703.....	086A	54	0357604.....	038C	103	3037664.....	054A	11D
0327704.....	086A	57		042B	103		056	11D
0327705.....	086B	67		042B	137		058	11D
0328501.....	038A	34		044	103		060A	11D
	040	34	0357605.....	038C	104	3047596.....	054A	11A
0328502.....	038B	42		044	104		056	11A
	040	42	0357606.....	042A	21		060A	11A
	042A	42		046	21	3047989.....	050A	11A
0328503.....	038B	43	0357607.....	044	22		050A	12A
	040	43	0357701.....	042A	36	* 3050142.....	052	11D

## Parts Index

PART NO.	PAGE	ITEM	PART NO.	PAGE	ITEM	PART NO.	PAGE	ITEM
* 3050143.....	052	12D	4182067.....	052	26	4208977.....	054B	36
* 3052332.....	052	11A	4183035.....	050B	24		056	36
	052	12A		052	24		060A	36
4015383.....	030A	202E	4184929.....	050B	15	4209994.....	072	
	030A	203D		052	15	4213075.....	058	03
	036A	202E		054A	15		060A	03
	036A	203D		056	15	4213113.....	020A	64
4027427.....	054B	29		058	15		022	
	056	29	4184930.....	060A	15		026A	64
	058	29		050B	13	4213419.....	054B	30
	060A	29	4184931.....	050B	25		056	30
4027959.....	022	15		052	25		060A	30
4027963.....	022	16	4184954.....	050B	18	4216263.....	080B	100
4028265.....	062	6		052	18		082B	100
	072	4	4185057.....	054A	17		086B	100
				056	17	4216264.....	084B	100
4033725.....	022	14		058	17	4216309.....	080A	1~40
4040813.....	028B	1400		060A	17	4216310.....	082A	1~40
	034A	1400	4186544.....	050A	04	4216311.....	084A	1~37
4040814.....	028B	140L		052	04	4216312.....	086A	1~36
	034A	140L						
4050968.....	058	36	4187924.....	050A	11E	4217020.....	002	1
	060A	36		050A	12E		004	
4055350.....	054B	36		054A	11E	4217021.....	004	1
	056	36		056	11E		006	
4070478.....	030A	219		058	11E	4217022.....	004	2
				060A	11E		008	
4104453.....	028A	139		066	01	4217023.....	004	5
	032	139	4188553.....	056	01		010	
4105795.....	064	02	4190088.....	058	02	4217024.....	002	2
4105797.....	064	01		060A	02		012	
4113154.....	008	13						
4116305.....	030A	201E	4190983.....	054B	28	4217025.....	002	3
	036A	201E		056	28		014	
4140470.....	020B	72		058	28	4224990.....	024	
	026B	72		060A	28		026A	
	028B	140N	4191490.....	050A	11B	4228672.....	086A	2
	034A	140N		050A	12B	4228673.....	086A	1
4144341.....	036A	219		054A	11B	4228674.....	084A	2
4153091.....	016	11		056	11B	4228675.....	084A	1
4153098.....	016	12		058	11B	4228676.....	082A	1
4163873.....	074	51		060A	11B	4228677.....	080A	2
	076	51	4193180.....	038A			082A	2
	078	51	4193531.....	080A		4228678.....	080A	1
4163874.....	074	52	4193532.....	084A		4229940.....	040	
	076	52	4193533.....	082A			042A	
	078	52	4193534.....	086A			044	
							046	
4166686.....	050A	02	4195421.....	050A	03		048	
	052	02		052	03	4230192.....	076	
4173208.....	050A	06	4196411.....	062		4237916.....	032	
	052	06	4198391.....	058	25		034A	
	054A	06		060A	25			
	056	06	4200582.....	064	03	4237918.....	036A	
	058	06	4200626.....	018		4238834.....	054A	24B
	060A	06		020A			056	24B
4177777.....	050A	05	4201401.....	074			060A	24B
	052	05	4201915.....	050A	01	4240150.....	054A	11B
	054A	05		052	01		056	11B
	056	05	4203412.....	054A	08		060A	11B
	058	05		056	08	4240151.....	050A	
	060A	05		058	08		050A	12E
4177896.....	050A	08		060A	08		054A	11E
	052	08	4203413.....	054A	03		056	11E
4179025.....	068			056	03		060A	11E
	070			058	03	4254179.....	042B	137
4179257.....	050A	07	4203421.....	054A	01	4254180.....	044	104
	052	07	4205209.....	002		4255302.....	004	31
							006	17
4181729.....	054B	35	4206274.....	028A		* 4259780.....	050B	14
	056	35	4206275.....	030A			052	14
	058	35	4206538.....	078			054A	25
	060A	35	4206916.....	002	4		056	25
4182067.....	050B	26		016				

# Parts Index

092

PART NO.	PAGE	ITEM	PART NO.	PAGE	ITEM	PART NO.	PAGE	ITEM
4263183.....	038B	101B	4506428.....	042B	103A	957366.....	008	15
	038C	102B		042B	105A		018	32
	038C	103B		042B	137A		020A	32
	038C	104B		044	103A		038C	110A
	042B	101B		044	104A		038C	111
	042B	102B		044	105A		038C	115A
	042B	103B	4506429.....	074	32		040	110A
	042B	137B	4506430.....	080A	57		040	111
	044	103B		082A	57		040	115A
	044	104B		084A	57		042B	110A
4265364.....	042B	137		086A	56		044	110A
4265365.....	044	104	4509180.....	020A	59		046	111
* 4274626.....	042B	103		026A	59		072	7
	044	103		028B	142		074	30
* 4276152.....	052	11B		034A	142	962567.....	054A	16
	052	12B		038A	7		056	16
* 4284175.....	052	13		040	7		058	16
* 4285209.....	050B	24		042A	7		060A	16
	052	24		044	7	964255.....	054B	37
4502456.....	074	50		046	7		056	37
	076	50		048	7		060B	38
	078	50		062	4	984338.....	050B	16
4506320.....	024	44		066	21		052	16
4506407.....	002	14		074	31	985099.....	028B	140Q
	028A	133	4509181.....	038A	6		034A	140Q
	032	133		048	6		038A	3
	038A	9	7017962.....	054A	00		048	3
	048	9		056	00		062	5
4506408.....	004	42	7017963.....	050A	00	988975.....	028A	115
	006	18		052	00		032	115
	018	44	7018460.....	058	00	991345.....	018	22
	028B	151F		060A	00		024	22
	034B	151F	9059848.....	056		999867.....	028B	140K
	076	39	9071735.....	050A	11		034A	140K
	078	39	9071736.....	050A	12			
4506409.....	066	20	9071737.....	054A	11			
4506412.....	022	12		056	11			
	038A	23		058	11			
	042A	23		060A	11			
	044	23	9071983.....	054A				
	046	23	9071984.....	050A				
4506418.....	008	14	9072360.....	064				
	022	10	9072923.....	058				
	028B	150		060A				
	034A	150	9085785.....	054A	24			
	064	03A		056	24			
4506420.....	022	11	9086168.....	060A	24			
	038A	38	9086169.....	054A	24			
	038B	101C	9086455.....	050A	12			
	038C	102C	9086456.....	050A	11			
	038C	103C	9086457.....	054A	11			
	038C	104C		060A	11			
	042A	38	9089355.....	054A	11			
	042B	101C		056	11			
	042B	102C		060A	11			
	042B	103C	9089808.....	050A	12			
	042B	105B	9089809.....	050A	11			
	042B	137C	* 9104359.....	052	11			
	044	103C	* 9104360.....	052	12			
	044	104C	* 9107499.....	052				
	044	105B	94-2011.....	020A	48			
4506424.....	076	32		028B	151H			
	078	32		030A	220			
4506428.....	038B	101A		036A	220			
	038C	102A	94-2012.....	030B	221			
	038C	103A		036B	221			
	038C	104A	954493.....	068	17			
	038C	105A		070	17			
	042B	101A	957366.....	004	43			
	042B	102A		006	10			

編 番  
PART NO.  
P133-1-7

**PARTS CATALOG**

**パーツカタログ**

**EX150**

**Excavator**

適用号機 01001~  
Serial No.

**HITACHI**

## FOREWORD

- ◎ This parts catalog shows the components of EX150 Hydraulic excavator.  
The numerical parts No. index is provided at the end of this parts catalog.  
In the parts index, a part No. with "\*" mark shows a newly added part on the parts catalog.
- ◎ In this parts catalog, SDX and DX are mentioned on the top of some pages. Subject to territory and / or machine, supplied machines are different. When ordering parts, please confirm whether the machine is SDX or DX.
- ◎ This parts catalog contains the most recent information available at the time of printing, and the contents of the list are based on information in effect at that time and are subject to change without notice.
- ◎ The references in the parts catalog of "LEFT", "RIGHT", "FRONT" and "REAR" are identified as follows.  
The driver's seat is positioned "LEFT" side, and the opposite side is "RIGHT".  
The front-end attachment is at the "FRONT". The counterweight is attached at the "REAR".  
For the undercarriage, the travel motor is at the "REAR", and the opposite is "FRONT".
- ◎ For the engine parts, please refer to the parts catalog of ISUZU diesel engine 4BD1T issued separately.

### 1. HOW TO ORDER PARTS

When ordering parts, Please specify the following items as shown in the following example.

	(EXAMPLE)	
(1) Model of Machine	(EX150)	} Shown on NAME-PLATE provided on MAIN FRAME on the lower right side of CAB
(2) Machine Serial No.	(133-01001)	
(3) Part No.	(A810165)	} Ordering Parts
(4) Part Name	(O-RING)	
(5) Q'ty	(2)	Ordering Q'ty
(6) Purchaser's Name and Address		

### 2. HOW TO USE THIS PARTS CATALOG

•ITEM                      Item No. shows the reference No. on the machine illustration.

- PART NO.           Part No. consists of a letter of the alphabet and numerals, or numerals only.
  
- PART NAME           Components of an assembly part are shown with "." marks and are shown on the line, or lines, below the assembly part. Also, if the component with "." mark consists of further components part, these further components are shown by the marks ".." .
  
- Q'TY                Q'ty shows the quantity used for one machine, however quantity of components shows the quantity for one assembly part.
  
- SERVICE CODE      Abbreviations in the column of service code have their own meaning as shown below.
  - W: The part with this abbreviation shows that the part requires some work on it before installing in the machine.
  - H: As the part with this abbreviation shows a precision part, please ask the authority for its repairing.
  - D: The part with this abbreviation is a component of an assembly and is not available independently. The assembly part containing this part should be ordered.
  - K: This means that the part is contained in the service parts kit.
  - R: The part with this abbreviation shows that the quantity of the part is changed depending upon the machine, such as an adjusting shim etcetera.
  - S: This part is specially provided as a service part, which was not provided in the machine before from shipping the factory.
  - Z: The part with this abbreviation related to the ENGINE.
  - OP: Optional parts
  - OS: Over-sized parts
  - US: Under-sized parts

(NOTE: Part with abbreviation "OS" or "US" is described on the line below the standard-sized part.)

  - #: The part with this mark is newly added on that page of the equipment.
  
- SERIAL No.           Applicable machine serial No. for the part is shown in this column.
 

Further, above this column, the applicable serial No. is shown for all parts described on that page.

Take this serial No. if the part is not mentioned its own applicable serial No.

Take the serial No. which includes both of for the part and for all parts described on the page if the part is mentioned its own applicable serial No.

If the abbreviation "D" is described as headed letter instead of the serial No. it means the produced date of the machine in which the parts are used.

(EXAMPLE: D89/11~.....produced on November 1989 and after)

If the abbreviation "H" is described as headed letter, it means the serial No. of equipment such as PUMP, MOTOR, CONTROL VALVE and etcetera.

If the abbreviation "F" is described as headed letter, it means the Front No. of front-end attachment such as BUCKET, BOOM, ARM and etcetera.

•ICA

ICA shows the interchangeability between the original and the improved parts. Abbreviations used in this column are as follows.

- I: Part No. in the column of "Replaceable part" can be used instead of this part but not vice versa.
- P: This must not be used for the machine. The part No. in the column "Replaceable part" should be used instead.
- T: Parts Nos. those in the column of "Replaceable part" can be used as an assembly instead of this part.
- Y: This part and the part in the column of "Replaceable part" are interchangeable with each other.

•REPLACEABLE PART

Interchangeable parts Nos. and their required quantity are shown in this column.

NOTE: If interchangeable improved parts are provided for the parts which you may order, the improved parts classified as "I", "P", "T" or "Y" may be supplied.

## 目次

PB-186

## CONTENTS

PB-A30

装置名称	Group Name	適用号機 SERIAL NO.	頁 PAGE
上部旋回体	UPPERSTRUCTURE		
フレーム	FRAME		001
エンジン	ENGINE		003
ラジエータ	RADIATOR		005
エアクリーナ	AIR CLEANER		007
マフラー	MUFFLER		009
燃料タンク	FUEL TANK		011
ポンプ装置〈SDX〉	PUMP DEVICE 〈SDX〉		013
ポンプ装置〈DX〉	PUMP DEVICE 〈DX〉		015
旋回装置	SWING DEVICE		017
オイルタンク	OIL TANK		019
オイルクーラ配管 (1)	OIL COOLER PIPINGS (1)		021
オイルクーラ配管 (2)	OIL COOLER PIPINGS (2)		023
オイルクーラ配管 (3)	OIL COOLER PIPINGS (3)		025
本体配管 (1)	MAIN PIPINGS (1)		027
本体配管 (2)	MAIN PIPINGS (2)		029
本体配管 (3)	MAIN PIPINGS (3)		031
エンジンコントロールレバー (1)	ENGINE CONTROL LEVER (1)	01001~01258	033
エンジンコントロールレバー (1)	ENGINE CONTROL LEVER (1)	01259~	035
エンジンコントロールレバー (2)〈SDX〉	ENGINE CONTROL LEVER (2) 〈SDX〉		037
エンジンコントロールレバー (2)〈DX〉	ENGINE CONTROL LEVER (2) 〈DX〉		039
操作レバー (1)	CONTROL LEVER (1)		041
操作レバー (2)〈SDX〉	CONTROL LEVER (2) 〈SDX〉		043
操作レバー (2)〈DX〉	CONTROL LEVER (2) 〈DX〉		045
パイロット配管 (1-1)〈SDX〉	PILOT PIPINGS (1-1) 〈SDX〉		047
パイロット配管 (1-1)〈DX〉	PILOT PIPINGS (1-1) 〈DX〉		049
パイロット配管 (1-2)	PILOT PIPINGS (1-2)		051
パイロット配管 (2-1)〈SDX〉	PILOT PIPINGS (2-1) 〈SDX〉		053
パイロット配管 (2-1)〈DX〉	PILOT PIPINGS (2-1) 〈DX〉		055
パイロット配管 (2-2)	PILOT PIPINGS (2-2)		057
パイロット配管 (3-1)	PILOT PIPINGS (3-1)		059
パイロット配管 (3-2)	PILOT PIPINGS (3-2)		061
パイロット配管 (3-3)	PILOT PIPINGS (3-3)		063

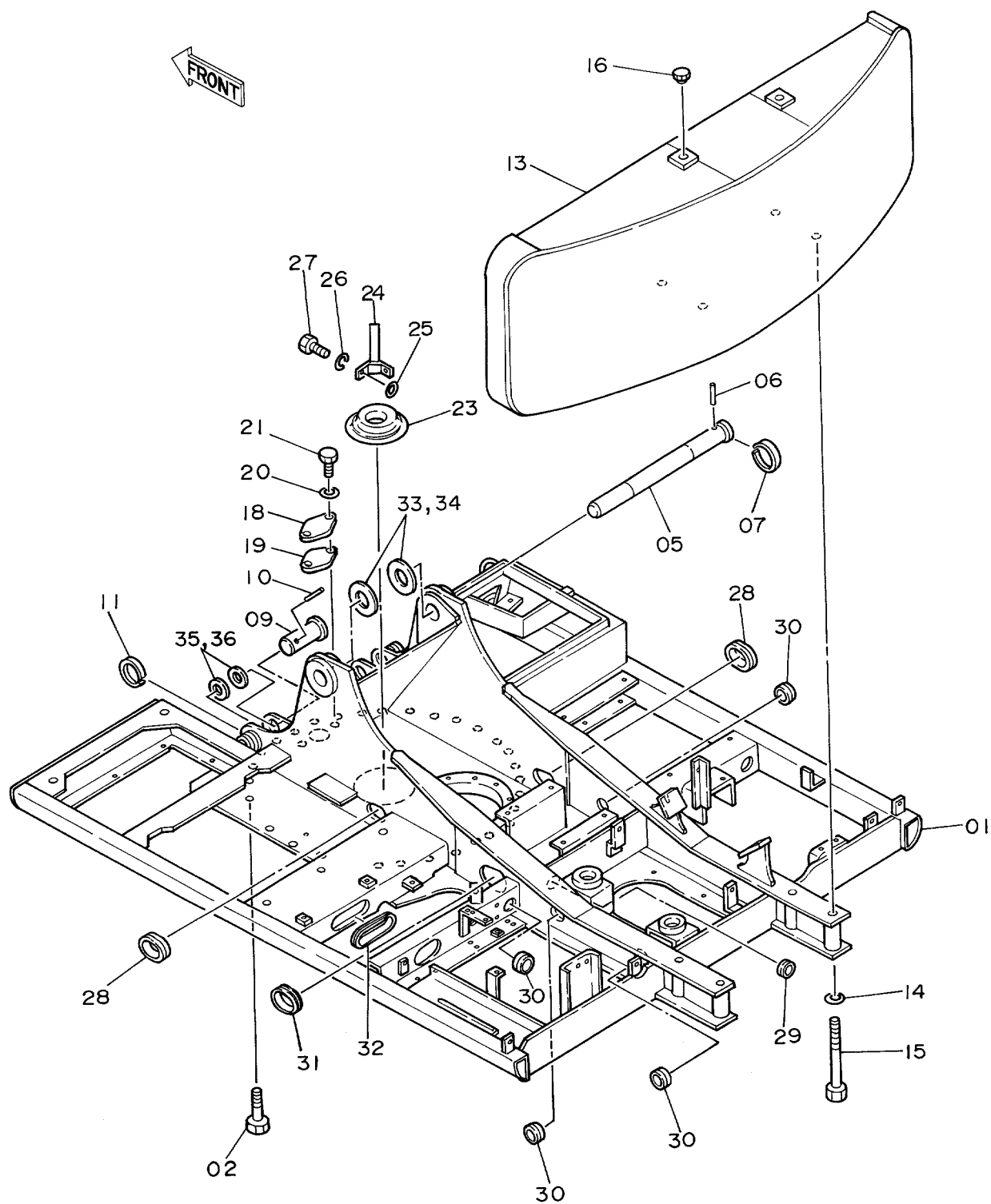


装 置 名 称	Group Name	適用号機 SERIAL NO.	頁 PAGE
パイロット配管 (4)	PILOT PIPINGS (4)		065
パイロット配管 (5)	PILOT PIPINGS (5)		067
コントロールボックス (右) <SDX>	CONTROL BOX (R) <SDX>		069
コントロールボックス (右) <DX>	CONTROL BOX (R) <DX>		071
コントロールボックス (左)	CONTROL BOX (L)		073
ゲージパネル <SDX>	GAUGE PANEL <SDX>		075
ゲージパネル <DX>	GAUGE PANEL <DX>		077
電気部品 (1) <SDX>	ELECTRIC PARTS (1) <SDX>		079
電気部品 (1) <DX>	ELECTRIC PARTS (1) <DX>		081
電気部品 (2) <SDX>	ELECTRIC PARTS (2) <SDX>		083
電気部品 (2) <DX>	ELECTRIC PARTS (2) <DX>		085
電気部品 (3)	ELECTRIC PARTS (3)		087
電気部品 (4) <SDX>	ELECTRIC PARTS (4) <SDX>		089
電気部品 (4) <DX>	ELECTRIC PARTS (4) <DX>		091
電気部品 (5)	ELECTRIC PARTS (5)		093
キャブグループ <SDX>	CAB GROUP <SDX>		095
キャブグループ <DX>	CAB GROUP <DX>		097
・キャブ (1) <SDX>	・CAB (1) <SDX>		099
・キャブ (1) <DX>	・CAB (1) <DX>		101
・キャブ (2)	・CAB (2)		103
・キャブ (3) <SDX>	・CAB (3) <SDX>		105
・キャブ (3) <DX>	・CAB (3) <DX>		107
・キャブ (4)	・CAB (4)		109
・キャブ (5) <SDX>	・CAB (5) <SDX>		111
・キャブ (5) <DX>	・CAB (5) <DX>		113
・キャブ (6)	・CAB (6)		115
シート	SEAT		117
カバー (1)	COVER (1)		119
カバー (2)	COVER (2)		121
カバー (3)	COVER (3)		123
カバー (4)	COVER (4)		125
カバー (5)	COVER (5)		127
ドアロック	DOOR LOCK		129
カーヒータ <SDX>	CAR HEATER <SDX>		131
カーヒータ配管 <SDX>	CAR HEATER PIPINGS <SDX>		133

装 置 名 称	Group Name	適用号機 SERIAL NO.	頁 PAGE
下部走行体	UNDERCARRIAGE		
トラックフレーム	TRACK FRAME		135
走行装置	TRAVEL DEVICE		137
フロントアイドル	FRONT IDLER		139
アジャスタ	ADJUSTER		141
上ローラ	UPPER ROLLER		143
下ローラ	LOWER ROLLER		145
トラックリンク 500G	TRACK-LINK 500G		147
センタージョイント	CENTER JOINT		149
走行配管	TRAVEL PIPINGS		151
フロント アタッチメント	FRONT-END ATTACHMENT		
ブーム	BOOM		153
スタンダードアーム 2.6M	STD. ARM 2.6M		155
バケット 0.55	BUCKET 0.55		157
フロント配管	FRONT PIPINGS		159
給脂配管	LUBRICATE PIPINGS		161
オプション パーツ	OPTIONAL PARTS		
操作レバー (1) <4本レバー式>	CONTROL LEVER (1) <4-LEVER TYPE>		163
操作レバー (2) <4本レバー式>	CONTROL LEVER (2) <4-LEVER TYPE>		165
パイロット配管 (5) <4本レバー式>	PILOT PIPINGS (5) <4-LEVER TYPE>		167
コントロールボックス (右) <4本レバー式>	CONTROL BOX (R) <4-LEVER TYPE>		169
キャブグループ <4本レバー式>	CAB GROUP <4-LEVER TYPE>		171
シート <4本レバー式>	SEAT <4-LEVER TYPE>		173
トラックリンク 600G	TRACK-LINK 600G		175
トラックリンク 700G	TRACK-LINK 700G		177
トラックリンク 760A	TRACK-LINK 760A		179
ロングアーム 3.1M	LONG ARM 3.1M		181
ショートアーム 2.0M	SHORT ARM 2.0M		183
バケット 0.45	BUCKET 0.45		185
バケット 0.6	BUCKET 0.6		187
バケット 0.7	BUCKET 0.7		189
梯形バケット 0.4	V-TYPE BUCKET 0.4		191
1本爪リッパ	ONE-POINT RIPPER		193
リッパバケット 0.5	RIPPER BUCKET 0.5		195

装 置 名 称	Group Name	適用号機 SERIAL NO.	頁 PAGE
法面バケット	SLOPE-FINISHING BLADE		197
予備ペダル	SPARE PEDAL		199
予備ペダル用パイロット配管	PILOT PIPINGS FOR SPARE PEDAL		201
ブレーカ, クラッシャ用配管 (1)	PIPINGS (1) FOR BREAKER, CRUSHER		203
ブレーカ, クラッシャ用配管 (2)	PIPINGS (2) FOR BREAKER, CRUSHER		205
ブレーカ, クラッシャ用配管 (3)	PIPINGS (3) FOR BREAKER, CRUSHER		207
〈NPKブレーカ〉	〈NPK BREAKER〉		
ブレーカ, クラッシャ用配管 (3)	PIPINGS (3) FOR BREAKER, CRUSHER		209
〈NPKブレーカ & クラッシャ〉	〈NPK BREAKER & CRUSHER〉		
ブレーカ, クラッシャ用配管 (3)	PIPINGS (3) FOR BREAKER, CRUSHER		211
〈オカダ/古河ブレーカ〉	〈OKADA / FURUKAWA BREAKER〉		
ブレーカ, クラッシャ用配管 (3)	PIPINGS (3) FOR BREAKER, CRUSHER		213
〈オカダ/古河ブレーカ & クラッシャ〉	〈OKADA / FURUKAWA BREAKER & CRUSHER〉		
合流配管 (1)	CONFLUENT PIPINGS (1)		215
合流配管 (2)	CONFLUENT PIPINGS (2)		217
工具及び予備品	TOOLS AND SPARE PARTS		
工具	TOOLS		219
予備品	SPARE PARTS		221
ネームプレート	NAME-PLATE		
ネームプレート (日本語)	NAME-PLATE (JAPANESE)		223
ネームプレート (英語) 〈SDX〉	NAME-PLATE (ENGLISH) 〈SDX〉		225
ネームプレート (英語) 〈DX〉	NAME-PLATE (ENGLISH) 〈DX〉		227
索 引	PARTS INDEX		229

# フレーム Frame

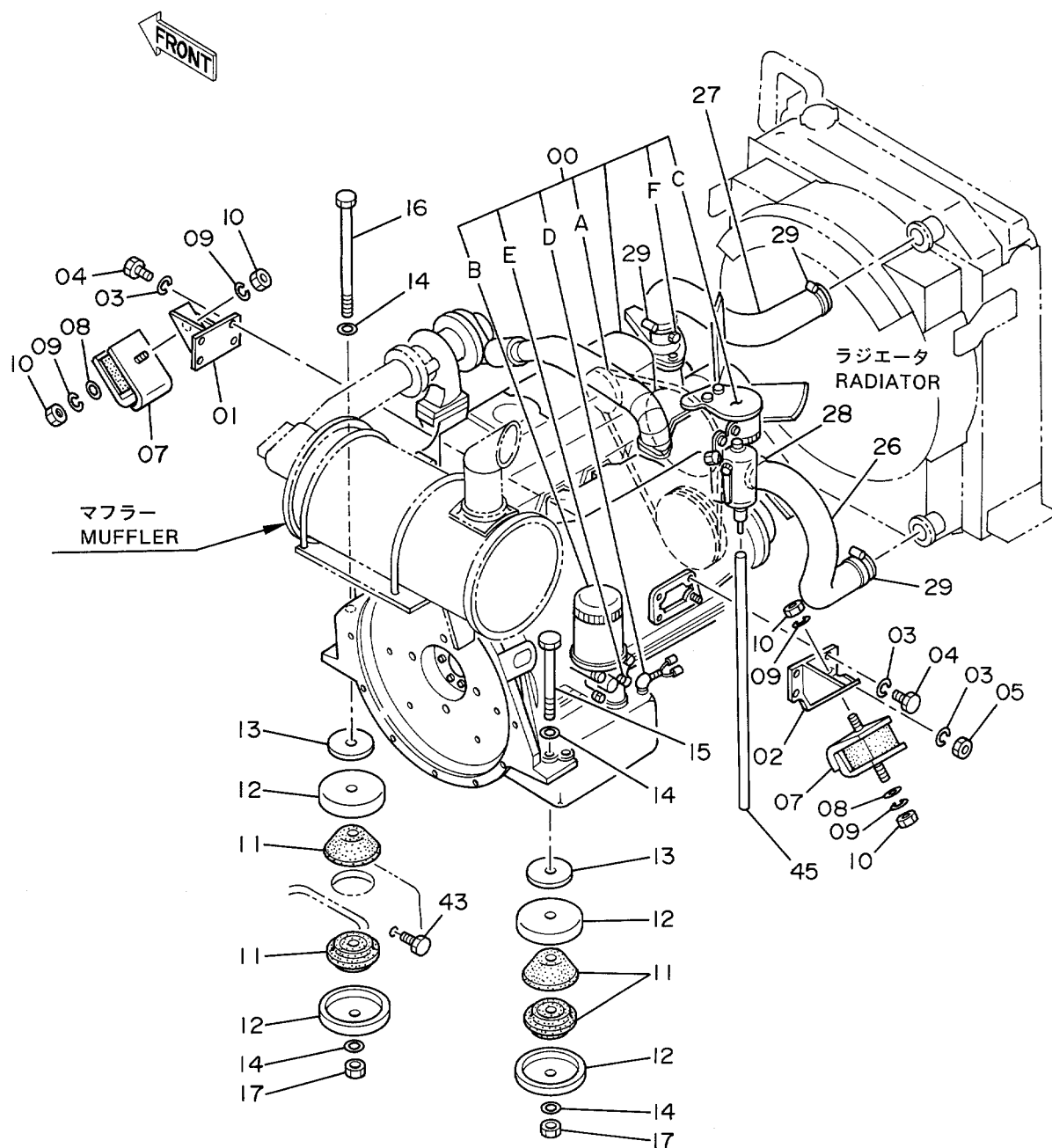


フレーム  
FRAME

01001~

符号 ITEM	部品番号 PART NO.	部 品 名 PART NAME	PART NAME or CODE	数量 QTY	サービス コード S. C	適用号機 SERIAL NO.	互換性 ICA	代替部品 REPLACEABLE PART	
								部品番号 PART NO.	数量 QTY
01	5002143	フレーム;メイン	FRAME;MAIN	1					
02	J931895	ボルト	BOLT	30					
05	3037278	ピン	PIN	1					
06	4098713	ピン	PIN	1					
07	4098712	リング	RING	1					
09	4197535	ピン	PIN	2					
10	4098717	ピン	PIN	2					
11	4098716	リング	RING	2					
13	6008143	ウエイト;カウンタ	WEIGHT;COUNTER	1					
14	4126485	ワッシャ	WASHER	4					
15	J932720	ボルト	BOLT	4					
16	4139583	キャップ	CAP	2					
18	4013896	カバー	COVER	1					
19	4157713	パッキン	PACKING	1					
20	A590110	ワッシャ;プレーン	WASHER;PLANE	2					
21	J901025	ボルト	BOLT	2					
23	4176863	カバー;リア	COVER;REAR	1					
24	8033211	ストッパ	STOPPER	1					
25	4114404	ワッシャ	WASHER	2					
26	A590914	ワッシャ;スプリング	WASHER;SPRING	2					
27	J901435	ボルト	BOLT	2					
28	4201750	ブッシング;ラバー	BUSHING;RUBBER	2					
29	4201749	ブッシング;ラバー	BUSHING;RUBBER	1					
30	4509404	ブッシング;ラバー	BUSHING;RUBBER	4					
31	4201751	ブッシング;ラバー	BUSHING;RUBBER	1					
32	4202008	ブッシング;ラバー	BUSHING;RUBBER	1					
33	4114816	シム 2.3	SHIM 2.3	1	R				
34	4114817	シム 1.0	SHIM 1.0	1	R				
35	4097354	シム 1.2	SHIM 1.2	2	R				
36	4097355	シム 2.3	SHIM 2.3	2	R				

# エンジン Engine

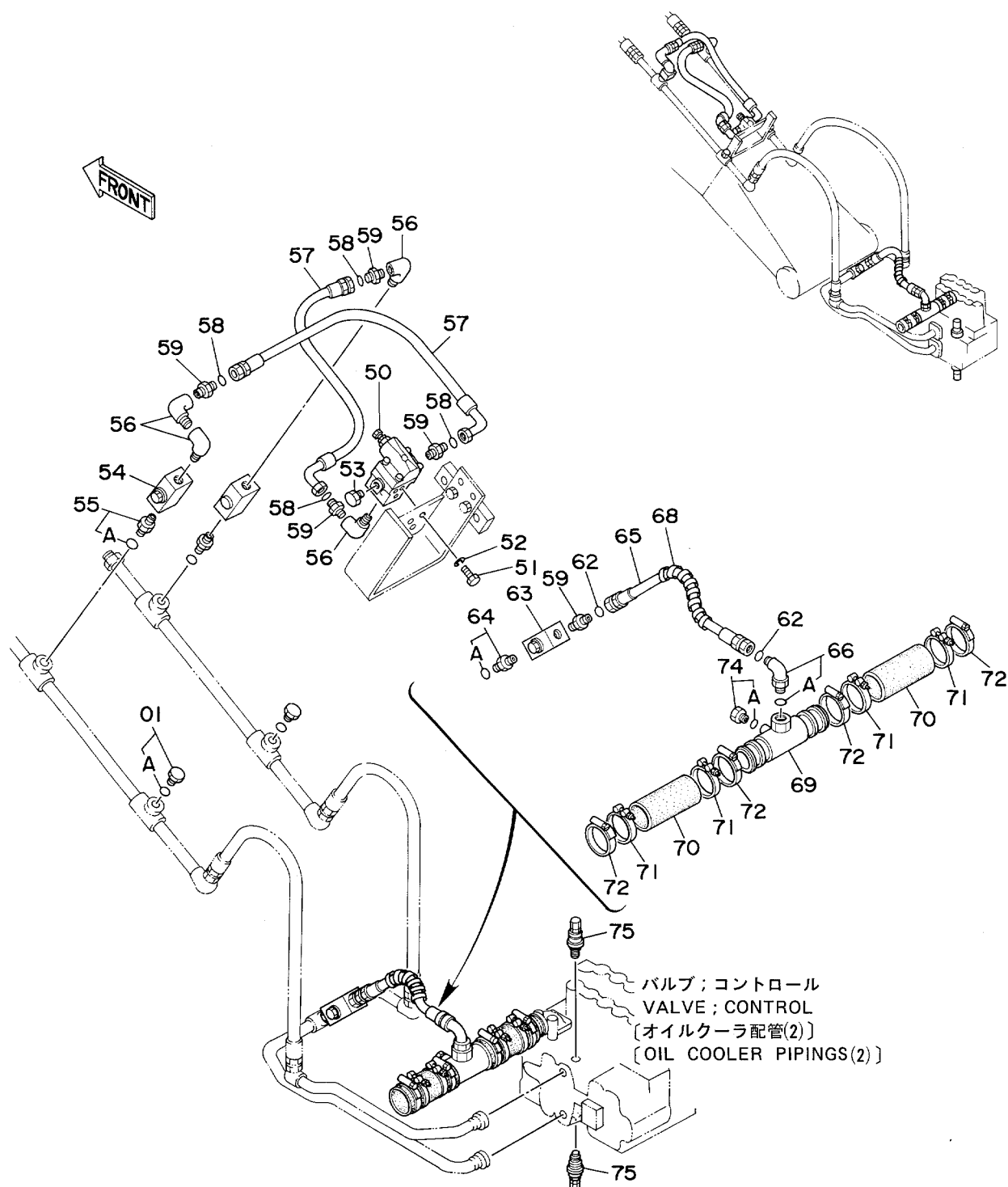


エンジン  
ENGINE

01001~

符号 ITEM	部品番号 PART NO.	部 品 名 PART NAME	PART NAME or CODE	数量 QTY	サービス コード S.C	適用号機 SERIAL NO.	互換性 ICA	代替部品 REPLACEABLE PART	
								部品番号 PART NO.	数量 QTY
00	4176896	エンジン	ENGINE	1	Z				
00A	4179863	・ベルト;V	・BELT;V	1	Z				
00B	4183853	・フィルタ;オイル	・FILTER;OIL	1	Z				
00C	4206130	・フィルタ;フューエル	・FILTER;FUEL	1	Z				
00D	4223445	・スイッチ;レベル	・SWITCH;LEVEL	1	Z				
00E	4223446	(オイルレベルセンサ) ・スイッチ;プレッシャ	(OIL LEVEL SENSOR) ・SWITCH;PRES.	1	Z				
00F	4223444	(オイルフィルタワーニング) ・スイッチ;サーモ (オーバーヒートワーニング)	(OIL FILTER WARNING) ・SWITCH;THERMOMETER (OVER HEAT WARNING)	1	Z				
01	8021976	ブラケット	BRACKET	1					
02	8021977	ブラケット	BRACKET	1					
03	A590910	ワッシャ;スプリング	WASHER;SPRING	8					
04	M111025	ボルト	BOLT	7					
05	M511008	ナット	NUT	1					
07	2016999	ラバー;クッション	RUBBER;CUSHION	2					
08	4086894	ワッシャ	WASHER	2					
09	A590914	ワッシャ;スプリング	WASHER;SPRING	4					
10	J950014	ナット	NUT	4					
11	4215703	ラバー	RUBBER	4					
12	4201870	ストッパ	STOPPER	4					
13	4185675	ストッパ	STOPPER	2					
14	4114405	ワッシャ	WASHER	4					
15	J931613	ボルト	BOLT	1					
16	4176282	ボルト	BOLT	1					
17	J951016	ナット	NUT	2					
26	2023943	ホース;ウォーター	HOSE;WATER	1					
27	3033315	ホース;ウォーター	HOSE;WATER	1					
28	4504198	クランプ;ホース	CLAMP;HOSE	1					
29	4504199	クランプ;ホース	CLAMP;HOSE	3					
43	J901020	ボルト	BOLT	1					
45	4171509	ホース;ビニール	HOSE;VINYL	1					

ブレーカ、クラッシャ用配管 (3) 〈オカダ/古河ブレーカ & クラッシャ〉  
 Piping (3) For Breaker, Crusher 〈OKADA/FURUKAWA Breaker & Crusher〉





FD-A8 (1005)

[illegible]

**索 引**  
**PARTS INDEX**

## Parts Index

PART NO.	PAGE	ITEM	PART NO.	PAGE	ITEM	PART NO.	PAGE	ITEM
A511207.....	192	08	A590114.....	088	01G	A590908.....	094	07
A590103.....	104A	27	A590116.....	042	80		096B	55B
A590105.....	080B	44	A590120.....	036	18		100	89
	080B	44	A590903.....	076A	27		102	89
	094	28		078A	27		104A	23
	096A	14		100	106		106	64
	098A	14		102	106		108	64
A590106.....	172	14	A590904.....	100	103		110	110
	036	16		102	103		110	80
	070	08		134	12		112A	12
	072A	08	A590905.....	038	02		114A	12
	074	04		040	02		116	45
	080B	41		080B	45		118	02
	080B	41		080B	45		128	06
	084	65		080B	53		128	29B
	086	65		082	53		128	31
	088	98		084	56		132B	82
	106	135		086	56		164A	12
	112A	09		090	21		164B	84
	112A	19		092	21		166	84
	114A	09		094	27		174	02
	114A	19		106	56		212	52
	132B	72		108	56		214	52
	132B	80		110	116		216	09
	170	08		112A	15		216	23
A590108.....	036	17		114A	15		218	01
	044	71	A590906.....	036	28	A590910.....	004	03
	046	71		038	09		008	01
	076B	42		038	16		008	14
	078B	42		040	16		014	07
	094	17		042	02		016	07
	116	46		070	05		020	10
	128	05		070	09		020	12
	128	39		072A	05		044	35
	132B	83		072A	09		044	41
	164B	86		072B	51		044	48
A590110.....	166	86		074	05		044	63
	002	20		080A	30		046	35
	042	82		080B	42		046	41
	044	36		080B	42		046	48
	054A	03		080B	49		046	63
	056	03		080B	68		048	02
	060	53		080B	71		048	37
	066	17		080B	74		050	02
	068	27		082	30		052	11
	070	27		082	68		054A	02
	072A	27		082	71		054A	11
	080B	76		082	74		054A	45
	080B	97		084	64		054B	52
	082	76		086	64		056	02
	094	93		110	83		056	45
	132A	22		112A	04		058	17
	168	20		112A	08		060	13
	170	27		112A	18		060	19
	200	10		114A	04		060	54
	202	15		114A	08		064	02
A590112.....	070	31		114A	18		064	61
	072A	31		132B	71		066	18
	074	33		132B	79		068	22
	120	07		164A	19		068	28
	120	40		170	05		070	26
	120	46		170	09		070	35
	120	71	A590908.....	034	44		072A	26
	120	84		036	41		072A	35
	122	07		042	86		074	37
	122	46		044	66		074	51
	122	50		046	66		090	12
	124	40		076B	43		092	12
	170	31		078B	43		094	51
A590114.....	038	55		088	54		096A	40

## Parts Index

PART NO.	PAGE	ITEM	PART NO.	PAGE	ITEM	PART NO.	PAGE	ITEM
A590910.....	096A	48	A590914.....	004	09	J011030.....	172	47
	096B	52		024	02	J011035.....	044	62
	098A	40		038	12		046	62
	098B	48		088	01F	J011040.....	044	40
	098B	52		088	01H		046	40
	100	124		154	23	J011050.....	058	16
	102	124	A590916.....	006	28	J011060.....	054A	10
	110	127		012	03	J011075.....	064	01
	112A	22		018B	154	J011220.....	008	12
	112B	54		018B	73	J011225.....	008	15
	112B	67		020	03		032	01
	114A	22		060	23		128	26
	114B	54		062	23	J011230.....	150	20
	114B	67		136A	30	J011235.....	024	05
	118	13		138	04	J011240.....	052	44
	120	75		138	08		152	14
	124	01		158	14	J011255.....	022	89
	126	11		186	14		032	10
	128	02		188	14		152	12
	132A	21		190	14		160	22
	134	32		202	18	J011265.....	022	99
	136A	13		218	62		024	40
	150	16	A590920.....	018B	139		032	11
	164A	02		158	08	J011275.....	024	42
	164A	39		186	08	J020625.....	132A	03
	164A	46		188	08	J020820.....	128	07
	164A	61		190	08	J020825.....	094	04
	164B	79	A741026.....	200	15	J021025.....	132A	01
	166	27	A763016.....	200	16		132A	20
	166	53	A764025.....	164A	07	J021030.....	044	34
	166	79	A810055.....	146	06		070	24
	168	21	A810060.....	140	02		072A	24
	170	26	A810065.....	144	07		170	24
	170	35	A810095.....	150	02	J021035.....	066	16
	172	40	A810110.....	150	14		068	26
	172	48	A810145.....	020	06B	J021040.....	044	34
	172	52	A810160.....	020	16		044	62
	174	13	A811035.....	024	18		046	62
	200	03	A811055.....	142	13		164B	78
	200	09	A811065.....	052	09C		166	78
	200	20	A811110.....	018A	37	J021055.....	054A	01
	200	23	A811120.....	022	52		056	01
	202	14	D99055.....	220	15	J021275.....	024	42
	206	36		220	15	J031225.....	136A	50
A590912.....	008	04		220	15	J031230.....	126	43
	008	11	D99056.....	220	16	J031260.....	136A	47
	010	40		220	16	J217083.....	124	31
	018A	30		220	16	J250006.....	070	40
	022	62	J010616.....	042	01		070	43
	022	66	J010840.....	128	32		072A	40
	024	06	* J010845.....	096B	58		072A	43
	024	41	J011020.....	008	02		074	42
	032	02		020	11		074	45
	032	12		054A	44		080A	26
	052	45		056	44		082	26
	124	39		128	01		170	40
	126	45		136A	12		170	43
	128	25	J011025.....	060	18	J250008.....	104A	35
	136A	49		074	50		104B	99
	136A	52		118	12	J251004.....	072B	55
	136B	54	J011030.....	044	47		080A	34
	150	21		046	47	J251006.....	070	39
	152	15		048	01		070	42
	160	23		050	01		072A	39
	192	09		070	25		072A	42
	204	09		072A	25		074	41
	206	18		096A	47		074	44
	206	34		098A	47		080A	27
	216	03		150	15		082	27
A590914.....	002	26		170	25		104A	14

## Parts Index

PART NO.	PAGE	ITEM	PART NO.	PAGE	ITEM	PART NO.	PAGE	ITEM
J251006.....	170	39	J900850.....	218	30	J901030.....	048	01
	170	42	J900860.....	216	21		050	01
J251008.....	104A	34	J900880.....	218	35		096A	47
	104B	98	J901000.....	052	10		098A	47
J401640.....	018A	21		200	19		100	123
J450510.....	090	20	J901014.....	016	12		102	123
	092	20		042	81		150	15
	102	142	J901016.....	054B	51		162	04
J460514.....	094	26		064	60		166	26
J460816.....	106	131		068	21		172	47
J650620.....	072B	53		090	13	J901035.....	014	05
J660614.....	074	23		092	13		016	05
J70782.....	012	09		094	52		044	62
J75284.....	136A	15		126	12		046	62
J75481.....	136A	02D		134	31		060	52
	156A	19		206	35		066	16
	182A	19	J901018.....	014	10		068	26
	184A	19		016	10		164B	78
	222	00		046	34		166	78
J75482.....	162	06	J901020.....	004	43		168	19
	222	01		008	02		200	02
J75581.....	222	02		020	11		200	22
J850410.....	072B	56		048	36		202	13
	080A	33		054A	44	J901040.....	044	40
J850614.....	104A	13		056	44		046	40
J850616.....	070	41		060	12	J901045.....	164A	38
	072A	41		060	18		164A	45
	170	41		070	34		166	52
J850620.....	070	45		072A	34	J901050.....	058	16
	072A	45		074	36	J901055.....	054A	01
	074	43		096A	39		056	01
J850625.....	080A	25		098A	39	J901060.....	054A	10
	082	25		120	74		164A	60
	170	45		124	88	J901070.....	064	01
J850640.....	070	38		128	01	J901075.....	064	01
	072A	38		136A	12	J901085.....	174	12
	074	40		170	34	J901220.....	008	05
	170	38		172	39		008	12
J850816.....	104A	33	J901022.....	144	09	J901225.....	022	90
	104B	97	J901025.....	002	21		032	01
J900610.....	132A	70		008	15		120	05
	164A	18		070	24		120	13
J900612.....	038	15		070	25		120	17
	040	15		072A	24		120	70
J900614.....	070	10		072A	25		120	82
	072A	10		074	50		122	01
	074	06		096A	39		122	17
	170	10		098A	39		122	49
J900616.....	042	01		100	123		124	61
	088	96		102	123		128	26
J900625.....	132A	03		110	126		136A	46
J900812.....	106	63		112B	53		136A	50
	108	63		112B	66		206	33
J900814.....	088	53		114B	53		216	04
J900816.....	034	43		114B	66	J901230.....	126	43
	036	40		118	12		150	20
	100	88		132A	01		216	02
	102	88		132A	20	J901235.....	024	05
	110	109		164A	01		206	20
	216	08		164A	66	J901240.....	010	39
J900818.....	110	79		170	24		018A	29
J900820.....	076B	41		170	25		052	44
	078B	41		172	39		152	14
	104A	22		200	08	J901245.....	124	53
	128	07	J901030.....	014	06	J901250.....	122	85
	212	51		016	06	J901255.....	022	89
	214	51		016	13		022	99
J900822.....	094	04		044	34		032	10
J900835.....	200	11		044	47		152	12
J900840.....	128	32		046	47		160	22

## Parts Index

PART NO.	PAGE	ITEM	PART NO.	PAGE	ITEM	PART NO.	PAGE	ITEM
J901255.....	204	08	M340814.....	144	06	M492564.....	226A	07
	206	17	M340820.....	142	14		228A	07
J901260.....	136A	47	M340825.....	028	39	M500303.....	076A	28
J901265.....	022	99		030	39		078A	28
	024	40		032	39	M500504.....	038	03
	032	11		204	03		040	03
J901275.....	024	42	M341022.....	024	86		106	60
J901425.....	154	22	M341030.....	022	11		108	60
J901430.....	024	80		028	36		132A	63
J901435.....	002	27	M341056.....	024	87	M500605.....	038	10
J901614.....	018B	153	M341065.....	024	17		072B	52
	018B	72	M341200.....	070	33		088	97
J901635.....	006	29		072A	33		088	97
	144	20		074	35		110	84
J901640.....	012	02		170	33	M500807.....	036	14
	020	01	M341220.....	122	41		042	85
	144	20	M341240.....	022	84		044	67
J901645.....	006	30	M341640.....	022	49		046	67
J901650.....	158	13	M351018.....	144	06		084	62
	186	13	M430308.....	100	105		086	62
	188	13		102	105		094	03
	190	13	M430408.....	112A	28		096B	55A
J901665.....	142	17		114A	28		112A	11
J901680.....	020	02	M430410.....	100	102		114A	11
J931613.....	004	15		102	102		118	03
J931640.....	136A	28	M430416.....	134	11		128	29A
J931650.....	138	03	M430508.....	080B	43		132B	81
J931670.....	138	07		080B	43		164A	13
J931685.....	146	20	M430510.....	090	20		164B	83
J931802.....	136A	03		092	20		166	83
J931895.....	002	02		096A	13		174	03
J932050.....	158	06		098A	13		200	12
	186	06		112A	14	M501411.....	088	01E
	188	06		114A	14	M511008.....	004	05
	190	06		172	13	M520012.....	010	41
J932065.....	018B	138	M430513.....	080B	52	M520807.....	010	37
J932720.....	002	15		082	52	M660016.....	096A	10
J950010.....	010	34		084	55		098A	10
	034	10		086	55		172	10
	034	13		094	26	R26906R.....	216	15B
	060	55		106	55		216	18A
	080B	75		108	55	U13920U.....	192	05
	082	75		110	115	U13921U.....	192	06
	094	92	M430610.....	080A	29	0000269.....	224A	13
	164A	67		080A	40	0228109.....	132A	46
	208	56		080A	40	0228110.....	132A	47
	210	56		080B	48	0228111.....	132A	48
J950012.....	022	98		080B	67	0228112.....	132A	49
	120	45		080B	70	0228113.....	132A	50
	122	45		080B	73	0228114.....	132A	51
	124	55		082	29	0228116.....	132A	53
	208	54		082	67	0228117.....	132A	54
	210	54		082	70	0228118.....	132A	55
J950014.....	004	10		082	73	0228119.....	132A	56
	042	10		084	63	0228120.....	132A	57
J950016.....	034	06		086	63	0228121.....	132A	58
J951016.....	004	17	M430616.....	112A	03	0228122.....	132A	59
J951020.....	158	07		112A	07	0228123.....	132A	67
	186	07		112A	17	0228124.....	132A	68
	188	07		114A	03	0262707.....	118	32
	190	07		114A	07		174	32
J952010.....	124	57		114A	17	0262708.....	118	24
J952014.....	038	13	M430820.....	116	44		118	31
	088	01I	M470310.....	074	20		174	24
M111022.....	020	15	M470616.....	104A	11		174	31
M111025.....	004	04	M492564.....	018A	67	0262709.....	118	28
M211000.....	034	11		150	19		174	28
M261045.....	034	14		224A	07	0262710.....	118	29
M340516.....	020	17C		224A	07		118	32
M340610.....	036	27		224A	07		174	29

## Parts Index

PART NO.	PAGE	ITEM	PART NO.	PAGE	ITEM	PART NO.	PAGE	ITEM
0262710.....	174	32	1010967.....	074	15	2025540.....	224A	02
0262711.....	118	30	1011308.....	044	33		224A	02
	174	30	1011309.....	044	32		224A	02
0304002.....	118	34	1011396.....	096A	50	2025738.....	226A	02
	174	34		098A	50		228A	02
0304003.....	118	35	1011764.....	224A	10	* 2029046.....	178	23
	174	35		226A	10	* 2030537.....	148	23
0311501.....	132A	60		228A	10	* 2030538.....	176	23
0311502.....	132A	61	1012155.....	044	33	3016445.....	224A	00
0311503.....	132A	62	1012156.....	044	32	3017307.....	224A	00
0311504.....	132A	64	1012425.....	224A	10	3028838.....	146	02
0311505.....	132A	65	1012755.....	224A	10	3030267.....	118	11
0311506.....	132A	66	* 1014684.....	148	00		174	11
0311507.....	132B	73		176	00	3030268.....	118	10
0311508.....	132B	74		178	00		174	10
0311509.....	132B	75		180	00	3032807.....	144	02A
0311510.....	132B	76	* 1014685.....	148	01	3033315.....	004	27
0311511.....	132B	77		176	01	3033925.....	146	00B
0311512.....	132B	78		178	01	3034548.....	018A	14
0311513.....	132A	41		180	01	3034904.....	018A	11
0311514.....	132A	44	2009165.....	224B	25	3034905.....	018A	12
0340801.....	118	21		224B	25	3034933.....	142	00A
	174	21		224B	25	3034935.....	142	11
0340802.....	118	22	2011238.....	180	23	3034936.....	142	12
	174	22		180	23	3035426.....	058	01
0340803.....	118	23	2011439.....	226A	25	3035617.....	140	03B
	174	23		228A	25	3035618.....	140	01
0340804.....	118	25	2015428.....	158	04	3035979.....	018B	156
	174	25		186	04	3036292.....	034	16
0340805.....	118	26		188	04	3036335.....	142	05
	174	26		190	04	3036513.....	142	00B
0340806.....	118	27	2015429.....	158	05	3036911.....	126	14
	174	27		186	05	3036912.....	126	18
0340807.....	118	33		188	05	3036913.....	126	17
	174	33		190	05	3036970.....	154	14
0340808.....	118	36	2016220.....	132A	19	3036998.....	054A	09
	174	36	2016999.....	004	07	3037278.....	002	05
0368101.....	118	21	2021270.....	148	23	3037279.....	154	06
	174	21	2021454.....	018A	25	3037280.....	156A	10
0368102.....	118	22	2021481.....	150	13		182A	10
	174	22	2021482.....	176	23		184A	10
0368103.....	118	25	2021613.....	024	15	3037281.....	156A	09
	174	25	2022464.....	018A	24		182A	09
0368104.....	118	26	2022471.....	018A	00		184A	09
	174	26	2022506.....	146	03	3037282.....	156A	08
0368105.....	118	27	2022827.....	140	00		182A	08
	174	27	2023804.....	156A	01A		184A	08
0368106.....	118	34		182A	01A	3037283.....	154	04
	174	34		184A	01A	3037284.....	156A	03
1005331.....	224A	12	2023845.....	156A	02A		182A	03
1008249.....	138	02		182A	02A		184A	03
1009275.....	150	00		184A	02A	3037285.....	154	00B
1009276.....	150	01	2023943.....	004	26	3037286.....	156A	00B
1010168.....	142	16	2024103.....	018A	31		182A	00B
1010674.....	148	00	2024493.....	042	26		184A	00B
	176	00	2024625.....	018A	49	3037287.....	156A	01C
	178	00	2024629.....	044	45		156A	02C
	180	00		046	45		182A	01C
1010675.....	148	01	2024630.....	044	44		182A	02C
	176	01		046	44		184A	01C
	178	01	2024640.....	178	23		184A	02C
	180	01	2024676.....	096A	36	3037425.....	136A	40
1010899.....	070	15		098A	36	3037426.....	136A	41
	072A	15		172	36	3037903.....	070	02
	170	15	2024705.....	180	23		072A	02
1010900.....	074	16	2024839.....	224A	14		170	02
1010949.....	018A	09		224A	14	3038101.....	126	13
1010966.....	070	14		224A	14	3038505.....	172	50
	072A	14	2025126.....	018A	10	3039048.....	224A	20
	170	14	2025148.....	018A	48		224A	20

## Parts Index

PART NO.	PAGE	ITEM	PART NO.	PAGE	ITEM	PART NO.	PAGE	ITEM
3039048.....	224B	20	* 3063162.....	224A	01	4067902.....	154	02
	226A	20	* 3063508.....	224A	01		156A	23
	228A	20	* 3063509.....	224A	01		182A	23
3039050.....	224A	19	* 3069095.....	080B	96		184A	23
	224A	19	4000909.....	008	13	4067985.....	156A	02B
	224B	19	4013896.....	002	18		182A	02B
	226A	19		136A	10		184A	02B
	228A	19	4020977.....	220	22	4069801.....	024	32
3039051.....	224A	21		220	22	4071213.....	024	31
	224B	21		220	22	4073519.....	124	77
	226A	21	4022696.....	106	136	4075190.....	012	06
	228A	21	4022697.....	044	72	4075359.....	156A	29
3039052.....	224A	18		046	72		182A	29
	224A	18		128	38		184A	29
	226A	18		164B	87	4075360.....	156A	30
	228A	18		166	87		182A	30
3039115.....	122	51	4031771.....	094	05		184A	30
3039221.....	118	09	4043976.....	080A	37	4080398.....	018B	141
	174	09	4044420.....	022	55	4080636.....	132B	84
3039222.....	118	07		028	41	4084578.....	156A	22
	174	07		030	41		160	07
3039223.....	118	08		032	41		182A	22
	174	08		048	26		184A	22
3039489.....	226A	00		064	62	4085447.....	038	14
	228A	00		212	67		040	14
3039721.....	126	42		214	68	4085560.....	022	85
3039868.....	018A	50		216	58	4086891.....	024	83
3039890.....	224A	11	4044928.....	044	68		216	05
3040042.....	200	47		046	68	4086894.....	004	08
3040114.....	224A	17		164B	85	4087559.....	224A	24
	224A	17		166	85		224B	24
	224A	17	4045245.....	036	15		224B	24
	226A	17	4051445.....	134	07		226A	24
	228A	17	4053610.....	160	13		228A	24
3040778.....	224A	01		160	13	4089012.....	110	86
3041200.....	156A	07		206	27	4089028.....	156A	25
	182A	07	4054024.....	162	03		182A	25
	184A	07	4055189.....	160	13		184A	25
3041201.....	156A	11	4055311.....	042	08	4093058.....	096B	55
	182A	11		090	85		128	29
	184A	11		164A	42	4093624.....	050	23
3041233.....	224A	18		218	56		056	04
3041234.....	224A	21	4055312.....	012	14		212	73
3042012.....	224A	01		038	11		214	74
3042363.....	224A	00		040	11	4094364.....	094	02
	226A	00		094	84	* 4095325.....	014	09E
	228A	00		134	06		014	09G
3043290.....	018B	156		210	67		016	09E
3043382.....	224A	01		216	54		016	09G
3043413.....	224A	00	4055497.....	220	48	4097354.....	002	35
3044454.....	224A	01		220	48		154	19
3044460.....	224A	01	4056016.....	038	01		156B	36
3045260.....	070	22		040	01		182B	36
	072A	22	4056017.....	038	08		184B	36
	170	22	4056018.....	042	84	4097355.....	002	36
3046047.....	224A	18		164A	11		154	20
3046048.....	224B	21	4061743.....	160	14		156B	37
3046055.....	224A	18	4063694.....	042	78		182B	37
	224A	18		164A	05		184B	37
	226A	18	4065280.....	020	07	4098710.....	192	01B
	228A	18	4065687.....	156A	21		194	01B
3046056.....	224A	21		160	01		196	01C
	224B	21		182A	21		198	02
	226A	21		184A	21	4098712.....	002	07
	228A	21	4065688.....	156A	16		156A	14
3047081.....	224A	01		182A	16		182A	14
3048376.....	154	04		184A	16		184A	14
3053093.....	018A	68	4065689.....	156A	17	4098713.....	002	06
3054797.....	224A	00		182A	17		156A	15
3055301.....	150	18		184A	17		182A	15



## Parts Index

PART NO.	PAGE	ITEM	PART NO.	PAGE	ITEM	PART NO.	PAGE	ITEM
4098713.....	184A	15	4126209.....	140	05	4147924.....	110	114
4098716.....	002	11	4126485.....	002	14	4147942.....	112B	51
	154	09	4127707.....	136A	02F		114B	51
	154	16	4127708.....	136A	02E	4147943.....	112A	38
	156B	33	4127741.....	136A	02C		114A	38
	182B	33	4127781.....	080A	24C	4148705.....	006	05
	184B	33		082	24C	4148706.....	006	15
4098717.....	002	10	4128454.....	112A	02	4148963.....	008	00F
	154	15		114A	02	4149125.....	200	14
4100967.....	012	24A	4128473.....	110	01	4151077.....	084	61
	020	28A	4130139.....	090	01		086	61
* 4101345.....	014	09C		092	01	4151888.....	094	25
	016	09C	4130169.....	162	17	4152704.....	022	48
4106307.....	154	11	4130174.....	162	18	4152940.....	080B	51
	156B	32	4131548.....	220	35		082	51
	182B	32		220	35	4153250.....	090	01B
	184B	32		220	35		092	01B
4106495.....	134	16	4132686.....	020	06A	4153251.....	090	01A
4107072.....	196	01B	4133527.....	054A	47		092	01A
4107836.....	154	00C		056	47	4153468.....	140	08
4107899.....	156A	18		058	47	4154425.....	156A	05
	182A	18		066	30		182A	05
	184A	18		202	19		184A	05
4109393.....	020	08		210	68	4154651.....	162	02
4110358.....	144	11		218	55	4154656.....	210	65
4112235.....	130	15	4134319.....	130	08	4154670.....	048	05
4113705.....	128	30	4134320.....	130	09		048	20
4114402.....	096A	49	4134322.....	130	12		048	27
	098A	49	4134323.....	130	13		050	05
	172	49	4134328.....	130	07		050	20
4114404.....	002	25	4134331.....	130	14		054A	04
4114405.....	004	14	4137298.....	204	45		054A	23
	006	27		206	46		056	23
	012	04	4138159.....	104A	26		058	23
	020	04	4138938.....	062	171	4154671.....	026	68
	096A	09		062	32		052	15
	098A	09		064	09		054A	05
	136A	29		216	27		056	05
	172	09		222	04		064	05
4114816.....	002	33	4139583.....	002	16		068	01
4114817.....	002	34	4141713.....	112B	45		168	01
4117704.....	164A	47		114B	45		216	39
	164A	65		116	09		218	41
4117705.....	166	54	4141747.....	110	70	4155678.....	146	05
4121128.....	124	89	4142844.....	090	15	4155698.....	146	08
4121152.....	084	57		092	15	4156434.....	054A	20
4121496.....	012	21	4143169.....	042	77		056	20
4121859.....	048	33		164A	08		066	05
	054A	48	4143813.....	158	12		168	24
	056	48		186	12		202	10
	066	29		188	12		218	32
	202	20		190	12	4156753.....	020	06
4122395.....	038	58	4144020.....	018A	07	4156850.....	024	25
4123177.....	084	58	4144838.....	070	04		210	71
4123815.....	156A	00E		072A	04		212	70
	182A	00E		170	04		214	71
	184A	00E	4146559.....	128	34	4157562.....	152	22
4124030.....	158	09	4146719.....	096A	12		212	65
	186	09		098A	12		214	66
	188	09		172	12	4157648.....	090	23
4124032.....	190	09	4146754.....	080B	50		092	23
	158	10		082	50	4157713.....	002	19
	186	10	4147892.....	116	02	4157879.....	148	21
	188	10	4147893.....	112A	39		176	21
	190	10		114A	39		178	21
4124033.....	158	11		116	03		180	21
	186	11	4147896.....	112B	49	4161992.....	070	28
	188	11		114B	49		072A	28
	190	11		116	38		170	28
4125320.....	020	23	4147897.....	116	40	4162812.....	208	58

## Parts Index

PART NO.	PAGE	ITEM	PART NO.	PAGE	ITEM	PART NO.	PAGE	ITEM
4162812.....	210	58	4178550.....	174	04~11	4187389.....	032	14
4162828.....	192	10	4178600.....	008	00	4187392.....	204	22
	194	05	4178601.....	006	25	4187681.....	018A	45
	196	08	4178684.....	020	17	4187757.....	080A	01A
	198	03	4179025.....	064	00		082	01A
4163453.....	156A	00G	4179110.....	158	15	4187759.....	080A	01A
	182A	00G		186	15		082	01A
	184A	00G		188	15	4187830.....	164A	41
4163454.....	156A	00C		190	15	4187846.....	128	04
	182A	00C	4179303.....	142	09	4187914.....	048	23
	184A	00C	4179863.....	004	00A	4188013.....	158	00A
4163456.....	156A	27	4180555.....	090	11		186	00A
	182A	27		092	11		188	00A
	184A	27	4181672.....	010	33		190	00A
4163457.....	156A	28	4182361.....	142	08	4188115.....	006	26
	182A	28	4183853.....	004	00B	4188127.....	136A	02G
	184A	28	4184394.....	080A	24	4188128.....	136A	02H
4163596.....	088	01A		082	24	4188374.....	038	54
4163597.....	088	01B	4184395.....	080A	21	4188375.....	038	59
4164870.....	148	12		082	21	4188376.....	038	57
	176	12	4184396.....	080A	18	4188409.....	012	22
	178	12		082	18	4188492.....	120	69
	180	12	4184397.....	080A	19	4188524.....	012	13
4164871.....	148	03	4184398.....	080A	22	4188551.....	048	31
	148	03		082	22	4188553.....	060	01
	176	03	4185675.....	004	13	4188558.....	090	14
	176	03		096A	07		092	14
	178	03		098A	07	4188627.....	024	20
	178	03		172	07	4188628.....	024	21
	180	03	4186366.....	018A	04	4188642.....	008	06
	180	03	4186443.....	142	04	4188646.....	008	09
4164928.....	148	13	4186445.....	142	06	4188687.....	064	03
	176	13	4186691.....	142	07	4188757.....	038	07
	178	13	4186740.....	096A	01	4188758.....	010	35
	180	13	4186742.....	118	21~36	4188762.....	084	59
x 4165676.....	096B	55		174	21~36		086	59
	128	29	4186743.....	080A	01	4188763.....	084	60
4167472.....	084	60A		082	01		086	60
	086	60A	4186745.....	080A	01	4189169.....	080A	32
4168820.....	012	22A		082	01	4189173.....	148	11
4171509.....	004	45	4187060.....	150	04		176	11
4172321.....	100	68	4187082.....	084	01		178	11
	102	68		086	01		180	11
4173387.....	038	53	4187083.....	084	01A	4189174.....	148	07
4174542.....	208	01		086	01A		176	07
	210	01	4187085.....	130	10		178	07
	210	74	4187088.....	080A	13		180	07
	212	01	4187089.....	080A	14	4189180.....	080B	66
	214	01	4187102.....	076A	01~40		082	66
4174947.....	148	22	4187223.....	094	45	4189183.....	034	18
	176	22	4187295.....	130	11	4189184.....	042	83
	178	22	4187308.....	026	74		164A	15
	180	22		028	19	4189254.....	088	01
4175878.....	144	05		030	19	4189579.....	206	49
4176072.....	018A	17		032	19	4189601.....	152	01
	018A	03		152	29	4189602.....	062	169
4176073.....	018A	22		160	12		064	04
4176247.....	018A	16		204	25		216	16
4176282.....	004	11		206	25	4189619.....	028	01
4176380.....	144	08		212	57		030	01
4176381.....	144	08		212	62		032	16
4176382.....	144	02B		214	58		152	23
4176429.....	150	10		214	62		160	11
4176479.....	150	06		222	03	4189739.....	120	73
4176480.....	150	07	4187317.....	018A	15	4189859.....	032	09
4176863.....	002	23		026	74		152	11
	002	23		152	07		160	20
4176896.....	004	00		206	40		204	06
4177853.....	018A	05		206	50		206	15
4178404.....	008	25		222	05	4190124.....	052	43
4178406.....	008	24						
4178550.....	118	04~11						

## Parts Index

PART NO.	PAGE	ITEM	PART NO.	PAGE	ITEM	PART NO.	PAGE	ITEM
4190124.....	152	13	4195823.....	134	10	4200435.....	220	09
4190126.....	160	21	4195898.....	150	12		220	09
	204	07	4195978.....	054A	08		220	09
	206	16	4196105.....	156A	00D	4200436.....	220	07
4190127.....	024	38		182A	00D		220	07
4190244.....	026	79		184A	00D		220	07
4190253.....	094	73	4196107.....	156A	01B	4200437.....	220	18
4190262.....	094	72		182A	01B		220	18
4190263.....	094	60		184A	01B		220	18
4190266.....	134	30	4196271.....	030	25	4200438.....	220	39
4190272.....	094	75	4196273.....	028	27		220	39
4190275.....	054B	50	4196274.....	028	28		220	39
	094	74	4196287.....	024	23	4200465.....	024	77
4190276.....	094	76	4196288.....	022	47		048	04
4190277.....	094	71	4196297.....	160	09		054A	12
4190292.....	048	35	4196411.....	048	00		054A	19
	054A	42	4196558.....	156A	00F		054A	24
	056	42		182A	00F		056	19
	064	59		184A	00F		056	24
4190705.....	088	51	4196560.....	128	37		058	19
4190987.....	020	23	4196693.....	042	06		058	24
4191038.....	094	65	4196694.....	042	07		210	66
4191187.....	010	01	4196945.....	006	18	4200466.....	026	01
4191300.....	052	09	4197033.....	156A	00H		060	21
4191301.....	052	09B		182A	00H		062	21
4191499.....	088	52		184A	00H		062	27
4191947.....	070	32	4197034.....	154	00E		064	07
	072A	32	4197035.....	158	00B		066	01
	074	34		186	00B		066	06
	170	32		188	00B		068	02
4191969.....	044	61		190	00B		152	20
	046	61	4197170.....	018A	47		152	21
	164B	77	4197535.....	002	09		168	02
	166	77	4197536.....	156A	00F		202	08
4191971.....	044	46		182A	00F		216	38
	046	46		184A	00F	4200467.....	068	03
4191972.....	070	06	4197781.....	074	21		202	09
	072A	06	4198171.....	162	10		216	31
	170	06	4198172.....	162	11		218	31
4191973.....	042	79	4198247.....	138	00	4200469.....	052	07
4193180.....	024	64	4198248.....	136A	44		052	55
4193531.....	160	25	4198386.....	154	00D	4200471.....	052	01
4193532.....	160	27		154	10		052	13
4193533.....	160	26	4198387.....	018B	157	4200472.....	216	36
4193534.....	160	28	4198407.....	216	26		218	36
4193703.....	132A	41~84	4198552.....	078A	01~40	4200494.....	048	24
4193746.....	008	08	4198598.....	024	39	4200495.....	048	25
4193826.....	048	03	4198624.....	006	01~20	4200496.....	048	28
4194192.....	142	03	4198799.....	026	73	4200498.....	054A	28
4194193.....	142	18	4198945.....	080A	38		056	28
4194712.....	018A	42	4198946.....	080A	39	4200521.....	072A	50
4195372.....	018A	66	4199052.....	208	55	4200580.....	062	01
4195431.....	148	05		210	55	4200626.....	018B	163
	176	05	4199401.....	074	19	4200658.....	070	48
	178	05	4199403.....	074	18		072A	48
	180	05	4199874.....	094	68		074	55
4195610.....	080A	24B	4200084.....	096A	03		170	48
	082	24B		098A	03	4200807.....	074	02
4195755.....	148	02		172	03	4200809.....	042	76
	176	02	4200085.....	096A	04	4201107.....	034	17
	178	02		098A	04		042	25
	180	02		172	04	4201132.....	094	08
4195756.....	148	10	4200086.....	096A	05	x 4201441.....	096B	57
	148	10		098A	05	4201749.....	002	29
	176	10		172	05	4201750.....	002	28
	176	10	4200220.....	006	13	4201751.....	002	31
	178	10	4200221.....	006	14	4201770.....	012	12
	178	10	4200434.....	220	37	4201774.....	206	47
	180	10		220	37	4201802.....	080A	15
	180	10		220	37	4201812.....	038	00

## Parts Index

PART NO.	PAGE	ITEM	PART NO.	PAGE	ITEM	PART NO.	PAGE	ITEM
4201862.....	134	09	4204556.....	104A	17B	4204600.....	100	104
4201870.....	004	12	4204557.....	104A	21		102	104
4201926.....	090	24	4204558.....	104A	24	4204601.....	110	107
		24	4204559.....	104A	25	4204602.....	110	108
4201927.....	090	29	4204560.....	104A	28	4204603.....	110	111
	092	29	4204561.....	104A	29	4204604.....	110	112
4202008.....	002	32	4204562.....	104A	30	4204605.....	110	113
4202009.....	020	27	4204563.....	100	92	4204606.....	100	117
4202103.....	022	59		102	92		102	117
4202112.....	216	25		104A	31	4204607.....	100	118
4202113.....	026	73	4204564.....	104A	32		102	118
4202312.....	220	30	4204565.....	104B	36		112A	25
	220	30	4204566.....	116	01~10		114A	25
	220	30	4204567.....	112B	50	4204608.....	100	120
4202422.....	060	26		114B	50		102	120
	202	07		116	39	4204609.....	100	122
	218	60	4204568.....	116	41		102	122
4202531.....	060	24	4204569.....	116	42	4204610.....	110	125
	062	24	4204570.....	116	43	4204611.....	100	128
	202	16	4204571.....	100	47		102	128
	218	63		102	47	4204612.....	112A	01
4202532.....	060	22	4204572.....	100	48	4204613.....	112A	05
	062	22		102	48		114A	05
	202	17	4204573.....	100	49	4204614.....	112A	06
	218	61		102	49		114A	06
4203000.....	058	30	4204574.....	100	50	4204615.....	112A	10
4203001.....	058	31		102	50		114A	10
4203002.....	058	32	4204575.....	100	51	4204616.....	112A	13
4203019.....	066	07		102	51		114A	13
4203025.....	068	05	4204576.....	100	52	4204617.....	112A	20
4203026.....	068	07		102	52		114A	20
4203027.....	068	06	4204577.....	106	01	4204618.....	112A	24
4203028.....	068	08		108	01		114A	24
4203137.....	024	88	4204578.....	106	54	4204619.....	112A	27
4203161.....	030	43		108	54		114A	27
4203189.....	096A	11	4204579.....	106	57	4204620.....	112A	30
	098A	11		108	57		114A	30
	172	11		112A	16	4204621.....	112A	31
4203211.....	218	57		114A	16		114A	31
4203220.....	206	29	4204580.....	106	58	4204622.....	112A	32
4203228.....	134	17		108	58	4204623.....	112A	33
4203232.....	034	04	4204581.....	106	59	4204624.....	112A	34
4203233.....	034	03		108	59		114A	34
4203235.....	034	11	4204582.....	106	62	4204625.....	112A	35
4203446.....	218	29		108	62		114A	35
4203447.....	218	34	4204583.....	106	61	4204626.....	112A	36
4203482.....	042	87		108	61		114A	36
4203707.....	042	88	4204584.....	112A	01~54	4204627.....	112A	37
4204138.....	018A	51	4204585.....	112B	72		114A	37
4204174.....	052	19		114B	72	4204628.....	112A	40
4204542.....	100	01	4204586.....	100	73		114A	40
4204543.....	104A	02		100	91	4204629.....	112A	41
4204544.....	104A	03		102	73		114A	41
4204545.....	104A	04		102	91	4204630.....	112B	42
4204546.....	104A	03A	4204587.....	100	74		114A	42
	104A	04A		102	74	4204631.....	112B	43
4204547.....	104A	03B	4204588.....	110	75		114A	43
	104A	04B	4204589.....	110	76	4204632.....	112B	44
4204548.....	104A	03C	4204590.....	110	77		114B	44
	104A	04C	4204591.....	110	78	4204633.....	112B	52
	104A	16C	4204592.....	110	81		114B	52
	104A	17C	4204593.....	110	82	4204634.....	116	01
4204549.....	104A	08	4204594.....	100	87	4204635.....	116	04
4204550.....	104A	09		102	87	4204636.....	116	05
4204551.....	104A	10	4204595.....	104B	93	4204637.....	116	06
4204552.....	104A	12	4204596.....	104B	94	4204638.....	116	07
4204553.....	104A	15	4204597.....	104B	95	4204639.....	116	08
4204554.....	104A	16	4204598.....	104B	96	4204644.....	018A	61
4204555.....	104A	17	4204599.....	100	100	4204645.....	018A	62
4204556.....	104A	16B		102	100	4204646.....	096A	38

## Parts Index

PART NO.	PAGE	ITEM	PART NO.	PAGE	ITEM	PART NO.	PAGE	ITEM
4204646.....	098A	38	4206467.....	174	14	4208104.....	112A	21
	172	38	4206551.....	008	00B		114A	21
4204661.....	028	17	4206552.....	008	00C	4208105.....	112A	23
	030	17	4206553.....	008	00D		114A	23
4204745.....	024	34	4206554.....	008	00E	4208167.....	224A	12
4204810.....	044	39	4206601.....	224A	13		226A	12
	046	39		226A	13		228A	12
4204959.....	044	65		228A	13	4208243.....	208	62
	046	65	4206602.....	224A	11		210	62
	164B	80		226A	11		212	54
	166	80		228A	11		212	63
4204996.....	044	01	4206667.....	208	50		214	55
	046	01		210	50		214	64
	166	33	4206669.....	208	51	4208244.....	208	58
4205029.....	080B	69		210	51		210	58
	082	69	4206671.....	006	17	4208246.....	080A	24A
4205043.....	096A	37	4206672.....	006	12		082	24A
	098A	37	4206676.....	006	02	4208354.....	074	22
	172	37	4206678.....	006	09	4208355.....	228B	34
4205080.....	096A	42	4206679.....	006	04	4208375.....	224B	26
	098A	42	4206770.....	120	33		224B	26
	172	42	4206771.....	120	15		224B	26
4205081.....	096A	43	4206772.....	120	47		226A	26
	098A	43	4206804.....	164A	06		228A	26
	172	43	4206814.....	224A	03	4208454.....	152	31
	096A	44		224A	03		212	56
4205082.....	172	44		224A	03		214	57
	070	47	4206815.....	224A	04	4208455.....	026	72
4205083.....	072A	47		224A	04	4208459.....	210	64
	170	47		224A	04	4208472.....	202	05
4205084.....	096A	45	4206930.....	006	20	4208473.....	202	06
	098A	45	4206931.....	006	19	4208486.....	210	70
	172	45	4207078.....	224B	32		212	69
4205179.....	080B	72		224B	32		214	70
	082	72		224B	32	4208498.....	096B	51
4205209.....	014	01		226B	32		098A	51
	016	01	4207079.....	224B	30		172	51
4205314.....	160	09		224B	30	4208682.....	164A	40
4205317.....	044	42		224B	30	4208733.....	216	14
	046	42		226A	30	4208843.....	076A	01
	164A	36		228A	30		078A	01
	166	36	4207080.....	224B	31	4208844.....	076A	02
	200	05		224B	31		078A	02
4205318.....	044	43		224B	31	4208845.....	076A	03
	046	43		226B	31		078A	03
	164A	35	4207153.....	224A	06	4208846.....	076A	04
	166	35		224A	06	4208847.....	076A	05
	200	06		224A	06	4208848.....	076A	06
4205357.....	162	01	4207232.....	224A	05	4208849.....	076A	07
4205360.....	162	05		224A	05	4208850.....	076A	08
	218	40		224A	05	4208851.....	076A	09
4205902.....	206	38		226A	05		078A	09
	214	54		228A	05	4208852.....	076A	10
	214	63	4207239.....	090	64		078A	10
4206087.....	118	06	4207240.....	090	63	4208853.....	076A	11
	174	06		092	63		078A	11
4206093.....	006	06	4207300.....	218	37	4208854.....	076A	12
4206098.....	008	00A	4207540.....	014	09		078A	12
4206128.....	006	11		016	09	4208855.....	076A	13
4206130.....	004	00C	4207841.....	052	09A		078A	13
4206274.....	138	00A	4207869.....	220	53	4208856.....	076A	14
4206275.....	138	00B		220	53		078A	14
4206301.....	164A	10		220	53	4208857.....	076A	15
4206303.....	224B	26	4207870.....	220	54	4208858.....	076A	16
	224B	26		220	54	4208859.....	076A	17
	224B	26		220	54		078A	17
4206304.....	164A	34	4207952.....	024	94	4208860.....	076A	18
4206361.....	210	63	4207995.....	206	23		078A	18
4206427.....	014	11		206	24	4208861.....	076A	19
	016	11	4208103.....	110	85		078A	19

## Parts Index

PART NO.	PAGE	ITEM	PART NO.	PAGE	ITEM	PART NO.	PAGE	ITEM
4208862.....	076A	20	4210341.....	202	04	4213468.....	062	41
	078A	20	4210356.....	212	64	4213469.....	060	42
4208863.....	076A	21		214	65	4213470.....	060	36
	078A	21	4210357.....	210	64	4213471.....	060	35
4208864.....	076A	21	4210412.....	084	58A	4213472.....	060	47
	076A	22	4210413.....	084	58B	4213473.....	060	48
	078A	21	4210414.....	084	57A	4213474.....	060	43
	078A	22	4210973.....	078A	04	4213484.....	022	97
4208865.....	076A	23	4210974.....	078A	05	4213493.....	160	09
	078A	23	4210975.....	078A	15	4213545.....	162	12
4208866.....	076A	24	4210976.....	078A	07	4213546.....	162	13
	078A	24	4210977.....	078A	08	4213547.....	162	14
4208867.....	076A	25	4210978.....	078A	16	4214246.....	132A	41~84
	078A	25	4210979.....	078A	35	4214870.....	040	00
4208868.....	076A	26	4211142.....	210	75	4214871.....	006	01
	078A	26		214	75	4214872.....	006	07
4208870.....	076A	29	4211166.....	200	04	4215192.....	008	18
	078A	29	4211167.....	200	18	4215195.....	006	08
4208871.....	076A	30	4211178.....	102	01	4215196.....	006	10
	078A	30	4211179.....	114A	01	4215255.....	110	129
4208872.....	076A	31	4211313.....	216	20	4215614.....	168	36
	078A	31	4213017.....	010	38	4215615.....	168	28
4208873.....	076A	32	4213018.....	120	86	4215616.....	168	34
	078A	32	4213083.....	126	47	4215617.....	168	37
4208874.....	076A	33	4213085.....	094	69	4215618.....	168	29
	078A	33	4213160.....	076A	34	4215619.....	168	35
4208876.....	076A	35	4213161.....	076B	39	4215620.....	168	30
4208877.....	076A	36		078A	34	4215621.....	168	31
	078A	36	4213261.....	216	07	4215622.....	168	32
4208878.....	076B	37	4213348.....	216	15	4215623.....	168	33
	078A	37	4213401.....	218	45	4215624.....	168	26
4208879.....	076B	38	4213402.....	216	44	4215625.....	168	27
	078B	38	4213409.....	216	12	4215703.....	004	11
4208933.....	098A	01	4213411.....	068	11	4216154.....	038	59
4208950.....	114A	01~54	4213412.....	068	12	4216180.....	034	18
4208955.....	084	59~62	4213413.....	068	13	4216448.....	012	08
	086	59~62	4213414.....	068	15	4216452.....	022	96
4208956.....	228A	32	4213415.....	068	18	4216453.....	048	21
4208957.....	088	01C	4213416.....	068	17		050	21
4208958.....	088	01D	4213417.....	068	16	4216454.....	054A	27
4208961.....	208	53	4213418.....	068	10		056	27
	210	53	4213428.....	028	23	4216455.....	026	93
4208967.....	212	58	4213429.....	030	22	4216456.....	026	92
	214	59	4213430.....	030	21	4217137.....	206	19
4208980.....	226A	03	4213431.....	030	26	4217315.....	152	31
	228A	03	4213432.....	028	29	4217316.....	152	32
4208981.....	226A	04	4213433.....	028	30	4217346.....	160	08
4208982.....	226A	06	4213442.....	066	10	4218097.....	008	19
	228A	06	4213443.....	066	09	4218287.....	206	48
4209103.....	082	16	4213444.....	066	11	4218295.....	206	32
4209104.....	072B	54	4213445.....	066	12	4218410.....	218	53
4209105.....	072A	49	4213446.....	058	35	4218412.....	218	52
4209158.....	212	50	4213447.....	064	08	4218413.....	218	48
	214	50	4213448.....	058	29	4218414.....	202	03
4209374.....	050	22	4213449.....	024	94	4218415.....	202	02
4209588.....	008	23	4213450.....	054A	41	4218416.....	218	50
4209730.....	212	64	4213451.....	054A	40	4218417.....	218	47
	214	65		056	40	4218419.....	218	46
4209749.....	054A	36	4213452.....	054A	39	4218420.....	218	49
	056	36		056	39	4218421.....	218	51
4209750.....	054A	37	4213453.....	066	08	4218422.....	202	22
	056	37	4213454.....	064	10	4218423.....	216	11
4209776.....	054A	25	4213455.....	052	16	4218426.....	202	21
	056	25	4213456.....	058	34	4218428.....	216	18
4209818.....	206	28	4213459.....	062	34	4218688.....	064	63
	206	39	4213463.....	062	46	4218728.....	216	59
4209994.....	050	00	4213464.....	062	37	4219313.....	136A	28
4210260.....	008	17	4213465.....	062	38	4219324.....	152	21
4210325.....	018A	65	4213466.....	062	39	4219753.....	112B	46
4210340.....	202	01	4213467.....	062	49		114B	46

## Parts Index

PART NO.	PAGE	ITEM	PART NO.	PAGE	ITEM	PART NO.	PAGE	ITEM
4219753.....	116	10	4248589.....	102	122	4268741.....	082	22A
4222359.....	110	125	4248908.....	080A	32A	4268742.....	080A	15A
4222874.....	020	17A	4250326.....	018A	45	4268750.....	080A	19A
4222875.....	020	17D	4250439.....	224B	36	4270819.....	224A	12
4222876.....	020	17E		224B	36	4270820.....	224A	13
4223444.....	004	00F		224B	36	4270865.....	224A	11
4223445.....	004	00D	4250440.....	226B	36	4282478.....	008	19
4223446.....	004	00E		228B	36	4282842.....	144	05
4223501.....	152	32	4251701.....	100	01A	4289287.....	106	137
4223527.....	220	35A	4251702.....	100	01A	* 4295833.....	088	01
	220	35A		102	01A	* 4307023.....	088	01A
	220	35A	4251704.....	100	01B	* 4307024.....	088	01B
4224631.....	154	21		102	01B	* 4307025.....	088	01C
4224990.....	018B	163	4252141.....	076B	40	* 4307026.....	088	01E
4225020.....	138	00		078B	40	* 4307027.....	088	01F
4225426.....	026	72	4252898.....	010	37	* 4307028.....	088	01D
4227030.....	146	20	4253032.....	088	01H	* 4310968.....	048	23B
4227353.....	020	06	4253033.....	088	01G	* 4310969.....	048	23C
4228160.....	006	06	* 4253411.....	148	22	* 4314613.....	088	01
4229613.....	224A	13		176	22	* 4321874.....	142	04
4229614.....	224A	11		178	22	* 4324881.....	008	18
4229635.....	224A	12		180	22	* 4325598.....	014	09A
4229940.....	024	64	* 4254886.....	148	12		016	09A
4230833.....	118	21~36		176	12	* 4325599.....	014	09B
	174	21~36		178	12		016	09B
4231413.....	112B	44		180	12	* 4325600.....	014	09D
	114B	44	* 4254887.....	148	11		016	09D
4231414.....	116	08		176	11	* 4325601.....	014	09F
* 4231542.....	150	07		178	11		016	09F
4232394.....	036	01~30		180	11	* 4325602.....	014	09H
4237916.....	138	00A	* 4254888.....	148	21		016	09H
4237918.....	138	00B		176	21	* 4326800.....	088	01
4238909.....	224B	34		178	21	* 4326801.....	088	01A
	224B	34	* 4255055.....	142	15	* 4326802.....	088	01B
	224B	34	* 4255210.....	226B	36	* 4326803.....	088	01D
	226B	34		228B	36	* 4335462.....	080B	95
	228B	35	4255309.....	100	138	* 4335726.....	080A	37
4239986.....	100	01		102	138	* 4336570.....	088	01
4239988.....	106	01	4256240.....	094	69A	449490.....	120	14
4239989.....	106	130	4256241.....	094	69B		120	18
4239990.....	106	132	* 4256244.....	148	02		122	18
4239991.....	106	133		176	02		126	44
4239992.....	106	134		178	02		136A	48
4239993.....	106	137		180	02		136A	51
4241146.....	036	01	* 4256344.....	224B	36		136B	53
4241147.....	036	02		224B	36	449558.....	012	25
4241148.....	036	03		224B	36		020	20
4241149.....	036	04	* 4257000.....	148	13	4501625.....	196	07
4241150.....	036	05		176	13	4501626.....	196	05
4241151.....	036	06		178	13	4501627.....	196	06
4241152.....	036	07		180	13	4502974.....	034	05
4241153.....	036	08	* 4257147.....	148	05	4504198.....	004	28
4241154.....	036	09		176	05	4504199.....	004	29
4241155.....	036	10		178	05	4504289.....	090	19
4241156.....	036	11		180	05		092	19
4241157.....	036	13	4257314.....	094	69C	4504491.....	024	24
4241158.....	036	19	* 4257460.....	148	07		210	72
4241159.....	036	20		176	07		212	71
4241160.....	036	21		178	07		214	72
4241161.....	036	22		180	07	4505392.....	080A	28
4241162.....	036	23	4259333.....	048	31		082	28
4241163.....	036	24	4263764.....	024	25	4506257.....	158	03
4241164.....	036	25	4263765.....	022	48		186	03
4241165.....	036	26	* 4266626.....	180	21		188	03
4241166.....	036	29	4266962.....	102	141		190	03
4241167.....	036	30	4266963.....	102	139	4506418.....	052	01A
4241304.....	036	12	4266964.....	102	140		052	07A
4241773.....	210	75	4268740.....	080A	18A		052	13A
4247974.....	008	23		082	18A		052	55A
4248589.....	100	122	4268741.....	080A	22A		062	01A

## Parts Index

PART NO.	PAGE	ITEM	PART NO.	PAGE	ITEM	PART NO.	PAGE	ITEM
4506418.....	062	169A	4510167.....	032	33	7019993.....	126	13
	064	04A		204	04	7020185.....	204	01
	216	15A	4510173.....	028	38	8016637.....	196	01
	216	16A		030	38	8016678.....	194	01
4506424.....	028	01A		032	38	8016743.....	192	01
	028	17A		204	02	8019989.....	128	28
	030	01A	4510901.....	136A	11	8021976.....	004	01
	030	17A	4513294.....	018A	08	8021977.....	004	02
	032	16A	4514700.....	012	07	8024463.....	130	02
	048	23A	452920.....	192	07	8024490.....	130	01
	152	01A	487081.....	042	24	8033211.....	002	24
	152	22A		070	46	8033464.....	020	14
	152	23A		072A	46	8033923.....	012	24
	160	11A		170	46	8034081.....	200	17
	208	01A	487195.....	124	56	8034717.....	008	03
	208	62A	4922685.....	220	29	8035042.....	146	00A
	210	01A		220	29	8035445.....	128	23
	210	62A		220	29	8035689.....	126	01
	210	74A	494918.....	104A	16A	8035692.....	126	41
	212	01A		104A	17A	8035871.....	010	36
	212	54A	5001993.....	154	00A	8036014.....	164A	16
	212	63A	5001994.....	156A	00A	8036783.....	044	37
	212	65A	5002029.....	074	14		046	37
	214	01A	5002033.....	070	13	8036784.....	044	38
	214	55A		072A	13		046	38
	214	64A		170	13	8037111.....	198	01
	214	66A	5002143.....	002	01	8037178.....	120	01
4506429.....	026	73A	6007799.....	012	20	8037179.....	120	02
4507228.....	134	01	6007860.....	120	43	8037180.....	124	63
4507397.....	008	07	6008143.....	002	13	8037181.....	120	08
	008	21	6008144.....	020	00	8037320.....	136A	27
4507512.....	008	20	6008145.....	124	60	8037415.....	024	04
4508050.....	134	08	6008255.....	136A	00	8037416.....	024	03
4508575.....	090	16	6008284.....	136A	02	8037465.....	156A	04
	092	16	6008363.....	074	00		182A	04
4509180.....	026	01A	6008562.....	096A	31		184A	04
	026	68A		098A	31	8037550.....	160	15
	026	79A		172	31	8037551.....	160	16
	052	15A	6008796.....	070	00	8037552.....	160	17
	054A	05A		072A	00	8037553.....	160	18
	056	05A		170	00	8037554.....	024	33
	060	21A	6008861.....	182A	00A	8037597.....	158	00
	060	26A	6008882.....	184A	00A	8037839.....	166	01
	062	21A	6009660.....	070	00	8037840.....	166	25
	062	27A		072A	00	8038101.....	074	32
	064	05A		170	00	8038102.....	070	30
	064	07A	7009413.....	132A	02		072A	30
	066	01A	7017125.....	010	32		170	30
	066	06A	7017357.....	140	03A	8038103.....	070	29
	068	01A	7017630.....	128	40		072A	29
	068	02A	7017641.....	020	21		170	29
	152	20A	7017663.....	122	36	8038104.....	074	31
	152	21A	7017822.....	154	00A~E	8038105.....	042	75
	168	01A	7017823.....	156A	00A~H	8038196.....	020	28
	168	02A	7017833.....	136A	43	8038238.....	070	22
	202	05A	7017834.....	136A	42		072A	22
	202	07A	7017862.....	120	43A		170	22
	202	08A		124	60A	8038382.....	060	29
	216	25A		128	40A		062	29
	216	26A		130		8038404.....	068	20
	216	38A	7017989.....	074	17	8038497.....	038	52
	216	39A	7018259.....	038	51	8038793.....	042	22
	218	40A	7018260.....	038	17	8038794.....	042	23
	218	41A	7018284.....	034	00	8038853.....	032	05
	218	60A	7018440.....	128	40	8038854.....	032	06
4509181.....	208	59	7018473.....	126	19	8039175.....	164A	00
	210	59	7018562.....	120	19	8039176.....	164A	04
4509404.....	002	30	7018953.....	182A	00A~H	8039177.....	164A	59
4510167.....	028	33	7018993.....	184A	00A~H	8039178.....	164A	58
	030	33	7019385.....	204	01	8039180.....	164A	44



## Parts Index

PART NO.	PAGE	ITEM	PART NO.	PAGE	ITEM	PART NO.	PAGE	ITEM
8039182.....	166	51	9075345.....	190	100	957366.....	050	05A
8039183.....	166	50	9076394.....	176			050	20A
8039184.....	164A	37	9076396.....	178			050	23A
8039268.....	022	43	9076398.....	180			054A	04A
8039269.....	120	23	9078073.....	186			054A	12A
8039649.....	164A	57	9078075.....	188			054A	19A
8039650.....	164A	56	9078076.....	190			054A	20A
8039651.....	164A	64	9078570.....	180			054A	23A
8039701.....	034	15	9079612.....	138			054A	24A
8039811.....	170	49	9079613.....	142	00		054A	25A
8040166.....	060	17	9085711.....	138			056	04A
8040184.....	126	41	* 9096741.....	148			056	19A
8040230.....	216	00	* 9096742.....	148	00~13		056	20A
8040277.....	052	39		176	00~13		056	23A
8040699.....	200	07		178	00~13		056	24A
8040807.....	186	00		180	00~13		056	25A
8040808.....	188	00	* 9096744.....	176			058	19A
8040809.....	190	00	* 9096746.....	178			058	23A
8040965.....	052	40	9097153.....	150	00~19		058	24A
8041053.....	152	24	9097161.....	150	00~19		066	05A
8041054.....	152	28	9097685.....	018B	200		068	03A
8041055.....	152	25	* 9098444.....	180			168	24A
8041056.....	152	26	9098996.....	136A	02		202	06A
8041057.....	152	27	9105749.....	144	00~11		202	09A
8041205.....	206	31	9105753.....	144	00		202	10A
8041237.....	206	14	9107499.....	042	04		210	66A
8041809.....	152	25	* 9114616.....	146	00~08		212	73A
8041810.....	152	26	* 9114659.....	146	00		214	74A
8041811.....	152	28	924327.....	220	33		216	31A
8041812.....	152	27		220	33		216	36A
8044341.....	038	52		220	33		218	31A
8045050.....	136A	27	934574.....	220	04		218	32A
* 8048596.....	096B	56		220	04		218	36A
8049279.....	018B	71		220	04		218	37A
* 8053499.....	020	28	934787.....	220	48	958393.....	220	24
* 8055911.....	128	28	936010.....	220	44		220	24
* 8056067.....	096B	56		220	44		220	24
9032155.....	196			220	44	958394.....	220	25
9032203.....	194		94-0633.....	212	55		220	25
9032493.....	192			214	56		220	25
9042615.....	196	101	94-0678.....	208	61	958407.....	220	14
9042616.....	194	100		210	61		220	14
	196	100		212	59		220	14
9042618.....	192	100	94-1304.....	206	28	959499.....	142	10
9059848.....	164A	76	94-1909.....	208	60	962002.....	018B	119
9061173.....	142	15		210	76	963227.....	192	03
9062404.....	144	00~11	94-2011.....	020	24	963228.....	158	01
9062438.....	150	00~16		140	07		186	01
9067007.....	080B	47		144	10		188	01
9069635.....	140			146	07		190	01
9069753.....	142		94-2014.....	212	53	963229.....	158	02
9070369.....	148			214	53		186	02
9070370.....	148	00~13	94-2022.....	012	11		188	02
	176	00~13	94-2024.....	012	23		190	02
	178	00~13		018A	36		192	04
	180	00~13		136A	15	966993.....	022	14
9071490.....	158		94-2025.....	018B	159	9712351.....	094	01
9071983.....	044	64		206	37	971376.....	194	01A
	046	64	94-2804.....	128	35		196	01A
	166	75	94-2805.....	122	87	971377.....	194	02
9071984.....	042	04	94-4026.....	012	08		196	02
9072360.....	054A	00	944690.....	018A	23	971378.....	194	03
	056	00	953612.....	020	17B		196	03
9072923.....	200	00	954493.....	054A	08A	971379.....	194	04
9074431.....	144	02	957366.....	024	77A		196	04
9074442.....	140	03		048	03A	971489.....	022	01
9074473.....	144	00		048	04A		028	32
9075345.....	158	100		048	05A	9717542.....	130	03
	186	100		048	20A	9723274.....	018A	16
	188	100		048	27A	9724736.....	040	17

## Parts Index

PART NO.	PAGE	ITEM	PART NO.	PAGE	ITEM	PART NO.	PAGE	ITEM
9725238.....	122	37	989850.....	220	19			
9725453.....	122	48		220	19			
972658.....	150	09		220	19			
9726691.....	120	03	989858.....	220	08			
9726692.....	120	04		220	08			
				220	08			
9726693.....	122	24	989859.....	220	10			
9726722.....	124	52		220	10			
9726772.....	012	26		220	10			
9726946.....	156A	01A~C	989860.....	220	10			
	182A	01A~C		220	11			
	184A	01A~C		220	11			
9726994.....	156A	02A~C		220	11			
	182A	02A~C	989861.....	220	02			
	184A	02A~C		220	02			
9727249.....	122	35		220	02			
9727250.....	122	34	991337.....	038	56			
9727615.....	096A	06	991349.....	150	11			
	098A	06	991352.....	018A	20			
	172	06	991721.....	024	22			
9727633.....	022	60	992444.....	142	00C			
	022	91	993043.....	220	20			
9727637.....	060	51		220	20			
	066	15		220	20			
	068	25						
	168	18						
	202	12						
9727639.....	060	50						
	066	14						
	068	24						
	168	17						
	202	11						
9727811.....	034	08						
9727822.....	022	91						
9728053.....	044	69						
	046	69						
	166	73						
9728054.....	164B	81						
9728055.....	164B	82						
9728065.....	044	70						
	046	70						
	166	74						
9728263.....	024	26						
9728264.....	022	12						
9728658.....	206	01						
9728687.....	210	69						
	212	68						
	214	69						
9728874.....	200	01						
9728875.....	200	21						
9728966.....	032	00						
9728979.....	216	01						
9729325.....	200	13						
9729727.....	206	12						
9729728.....	206	13						
9729786.....	204	00						
9731002.....	204	00						
9731359.....	206	14						
973346.....	192	01A						
973347.....	192	02						
985706.....	220	45						
	220	45						
	220	45						
985710.....	220	23						
	220	23						
	220	23						
986910.....	022	10						
	028	35						
989848.....	220	21						
	220	21						
	220	21						